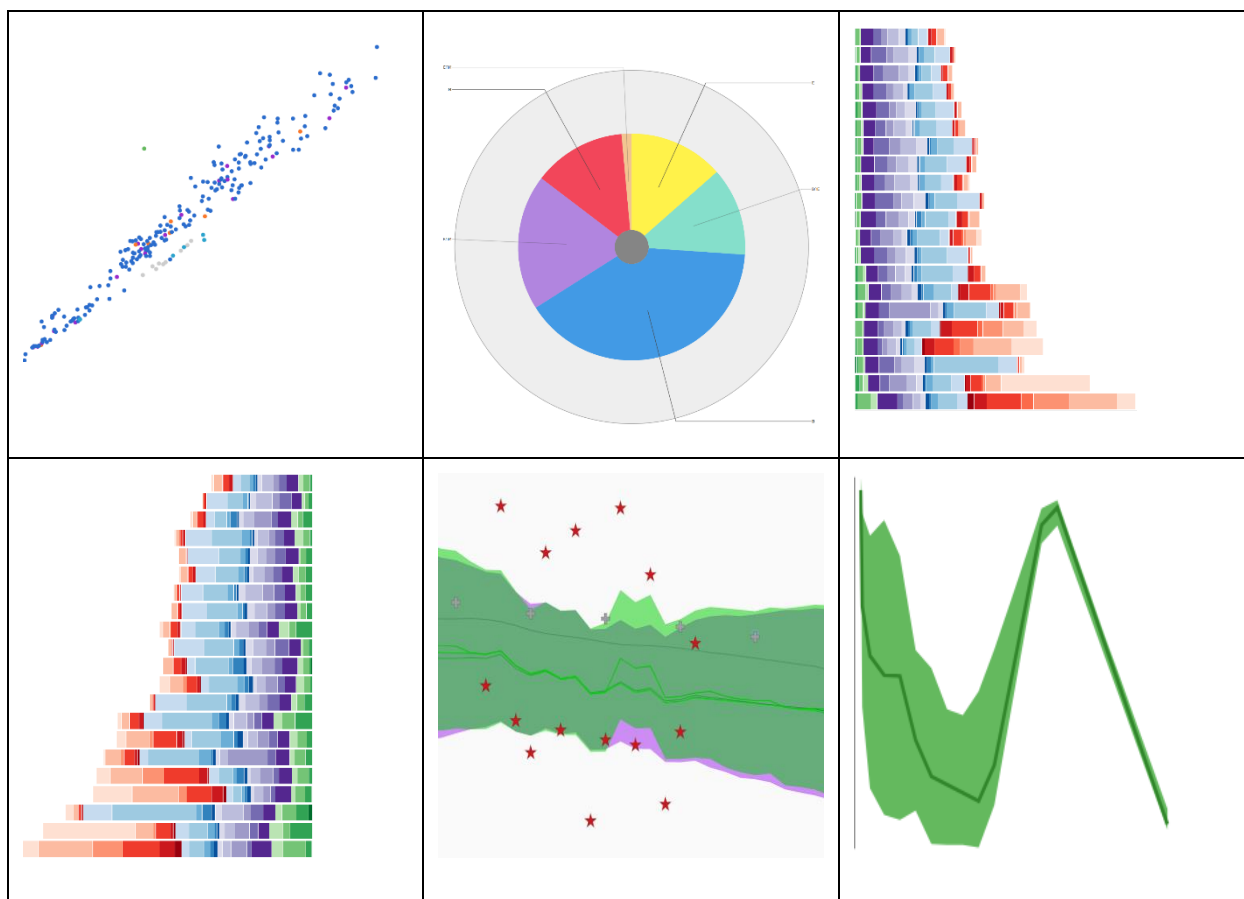




## GBD 2017 Online Tools Overview



## Preface

This document is a basic guide to the suite of web-based tools for the Global Burden of Disease Study (GBD). These tools allow students, researchers, policymakers, and the public to view and interact with results from GBD. They are all freely available for non-commercial use.

This guide touches on the Global Health Data Exchange (GHDx) data catalogue and the code used to generate GBD results. For GBD 2017, population estimates, fertility estimates, and full and abridged life tables are disseminated through GHDx data records. However, the guide's primary focus is on the tools which allow users to query, view, and download, in CSV format, the following:

- Data input sources (lists of the raw data sources used to produce estimates for different components of the study, and relevant metadata about them)
- Model input data (data points adjusted to meet GBD's format and quality requirements)
- Estimates (final GBD results: the point estimates and 95% uncertainty intervals, where appropriate, for study indicators)

These tools are the GBD Results Tool, GBD Compare, Mortality Visualization (MortViz), Causes of Death Visualization (CoDViz), Epi Visualization, (EpiViz), and GBD Data Input Sources Tool. This guide offers definitions for the indicators (or "measures") and other dimensions of the data available in them and an overview of what data users can expect to view and download from each. Lists of numeric IDs and standardized names are provided for the values in each dimension.

Additional data resources for GBD 2017 are available at <http://ghdx.healthdata.org/gbd-2017>.

Information on the GBD study is available at <http://www.healthdata.org/gbd>

## Contact Us

Do you have questions or comments about any of the GBD 2016 online tools?

Email us at [data@healthdata.org](mailto:data@healthdata.org)

Call us at +1-206-897-2800.

Fax us at +1-206-897-2899.

Write us at

Institute for Health Metrics and Evaluation  
2301 Fifth Ave., Suite 600  
Seattle, WA 98121  
USA

## Contents

Preface .....	2
Contact Us .....	2
Section 1: Tool Descriptions.....	4
1.1 GBD Results Tool .....	4
1.2 GBD Compare .....	4
1.3 Mortality Visualization (MortViz).....	5
1.4 Causes of Death Visualization (CoDViz) .....	5
1.5 Epi Visualization (EpiViz) .....	6
1.6 Data Input Sources Tool .....	6
1.7 GHDx .....	7
1.8 Code .....	7
Section 2: Term Definitions.....	8
Section 3: Tool Outputs and Indicators Overview .....	12
Section 4: Dimension Values .....	14
4.1 Age Group .....	14
4.2 Cause .....	15
4.3 Etiology.....	23
4.4 Impairment .....	24
4.5 Injuries.....	25
4.5 Location.....	26
4.6 Measure .....	37
4.7 Model (EpiViz) .....	38
4.8 Risk .....	67
4.9 Sequela Aggregate .....	69
4.10 Sex .....	78

## Section 1: Tool Descriptions

### 1.1 GBD Results Tool

The GBD Results Tool allows the user to query and download in a CSV file the indicators from the most recently published annual GBD. Users can select a specific subset of results according to different dimensions including indicator, cause, risk, location, age, and year.

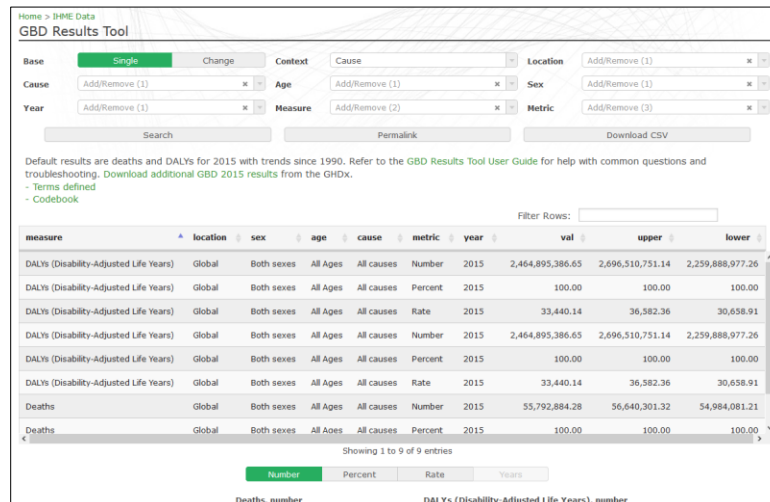


Figure 1. GBD Results Tool

The GBD Results Tool is found here: <http://ghdx.healthdata.org/gbd-results-tool>.

### 1.2 GBD Compare

GBD Compare allows users to analyze the world's health levels and trends in the most recent set of annually published results. Users can use maps, plots, treemaps, arrow diagrams, and a dozen other charts to compare patterns and trends in sexes and risks over time, to explore the health profile within a country by age and sex; to compare countries with one another; or to explore regional or global trends. Users can drill from a global view into country views including subnational details for some countries; can examine how disease patterns have changed over time; and can explore which causes of death and disability are increasing and which are decreasing. GBD Compare is the GBD's most comprehensive visualization, displaying data from the widest range of GBD components.

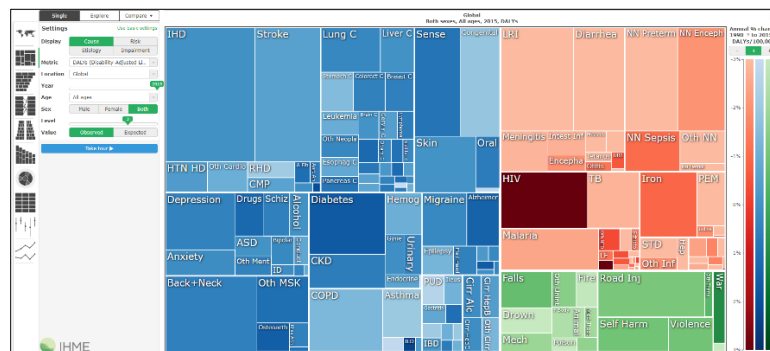
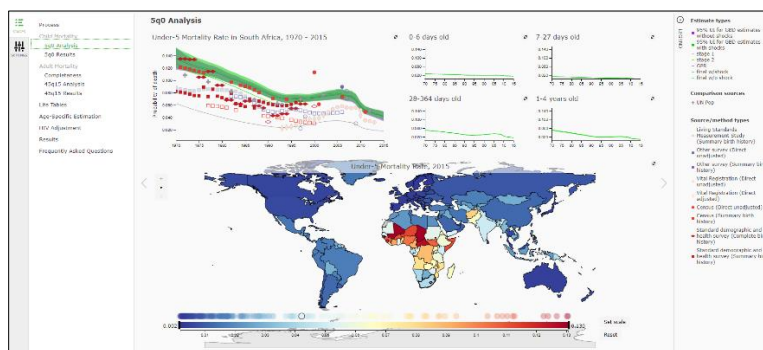


Figure 2. GBD Compare

GBD Compare is found here: <http://www.healthdata.org/data-visualization/gbd-compare>.

### 1.3 Mortality Visualization (MortViz)

The Mortality Visualization (MortViz) allows users to view data and indicators of all-cause mortality. Users are able to follow each analytic step from the beginning of the data preparation to the final results and each transformation along the way. The visualization provides views of both child mortality (defined as the probability of dying between birth and age 5) and adult mortality (defined as the probability of dying between age 15 and 60) for each of the locations for which indicators are produced for the annual global GBD enterprise.

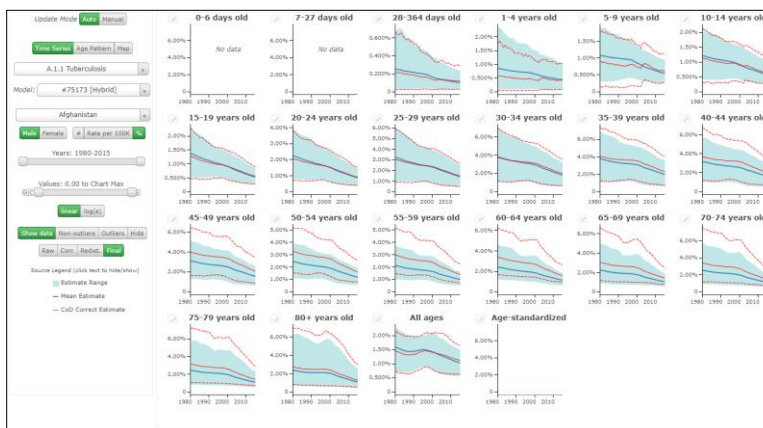


**Figure 3. MortViz**

MortViz is found here: <http://www.healthdata.org/data-visualization/mortality-visualization>.

## 1.4 Causes of Death Visualization (CoDViz)

The Causes of Death (CodViz) allows users to view data and estimates of death by cause, age, sex, and location over time. Deaths are represented as rates, cause fractions (i.e., the proportion of total deaths due to a cause), and numbers. Users have the ability to see the transformations of the input data to correct for different biases and to see the effects of garbage code redistribution. They also have access to the model parameters that were used to generate results for a given cause.



**Figure 4. CoDViz**

CodViz is found here: <http://www.healthdata.org/data-visualization/causes-death-cod-visualization>.

## 1.5 Epi Visualization (EpiViz)

The Epi Visualization (EpiViz) allows users to view data from the nonfatal health outcomes component of the GBD. It allows users to see the input data, data corrections, model settings and results of prevalence, incidence, remission, excess mortality and cause-specific mortality rates for each of the diseases and risk factors that have been analyzed in the GBD.

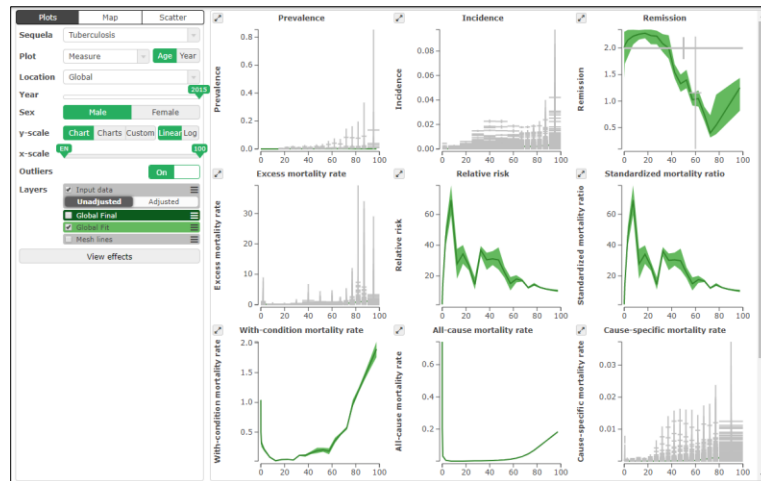


Figure 5. EpiViz

EpiViz is found here: <http://www.healthdata.org/data-visualization/epi-viz>.

## 1.6 Data Input Sources Tool

The Data Input Sources Tool allows users to view citations for sources of data by cause, location, and year for the most recently published set of annual results. For example, users can search for all sources associated with a particular cause and location and retrieve a set of citations used by GBD to produce those indicators.

The tool's CSV export function also provides the complete set of dimensions and metadata associated with that source.

The screenshot shows the 'Global Burden of Disease Study 2015 (GBD 2015) Data Input Sources Tool' web page. It includes a header with 'Home > DIME Data' and a 'Resources' section with links to 'Contact Us', 'Data Sites We Love', and 'GBD Data Visualizations'. The main content area explains the tool's purpose: to explore GBD 2015 input sources and retrieve relevant metadata. It provides instructions on how to use the tool, including downloading input sources as a CSV file. Below this, there are sections for 'User guide' and 'Code values and descriptions'. At the bottom, there is a 'Components' section with dropdown menus for 'All GBD', 'Locations', 'Causes', 'Risks', 'Impairments', 'Covariates', and 'All Diseases'. A 'Submit query' button is located at the bottom right of the components section.

Figure 6. GBD Data Input Sources Tool

The Data Input Sources Tool is found here: <http://ghdx.healthdata.org/gbd-2017/data-input-sources>.

## 1.7 GHDx

The Global Health Data Exchange (GHDx) is a catalogue of data sources related to health. It includes citations for all sources used in the most recent version of the annually published GBD. (It also includes sources that are not included in or relevant to the GBD, but are health-related and may be of use to other research.) Users can perform searches based upon keyword, location, data type, and year. Full citation information is provided for all sources. Wherever possible, links are provided to the data contained in each source. Where data holders prohibit direct access to the data without further registration or request, links are provided to the relevant instructions.

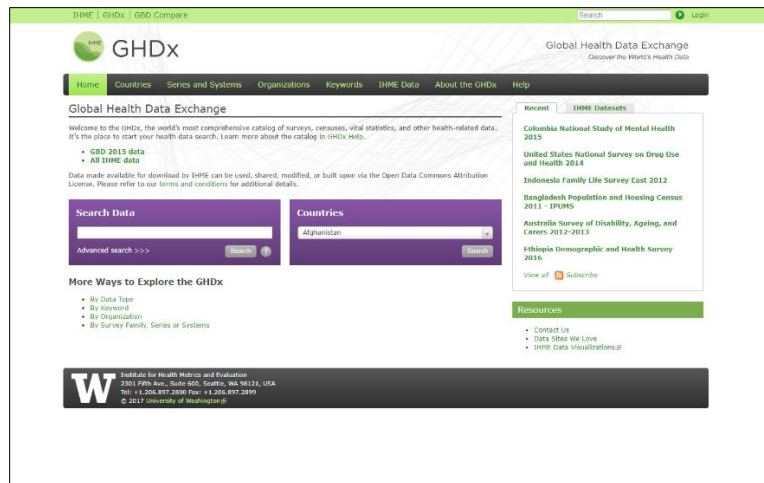


Figure 7. GHDx

The GHDx is found here: <http://ghdx.healthdata.org/>.

## 1.8 Code

Starting with the 2015 study, GBD publishes its analytic code in concordance with the [GATHER](#) guidelines.

Code is found here: <http://ghdx.healthdata.org/gbd-2017/code>.

## Section 2: Term Definitions

Term	Definition
<b>Age group</b>	A population segment within a specified age range.
<b>All-cause mortality rate</b>	The number of deaths due to all conditions by the mid-year population.
<b>Cause</b>	A single disease or injury or an aggregation of diseases and injuries that causes death or disability.
<b>Cause hierarchy</b>	The classification of diseases and injuries. The causes in GBD are classified into 4 levels. At level 1, there are three large cause groupings: communicable, maternal and neonatal conditions and nutritional deficiencies (CMNN); non-communicable diseases (NCDs); and injuries. At level 2 there are 21 disease and injury categories. The finest level of detail in causes is provided at levels 3 and 4.
<b>Cause-specific mortality Rate</b>	The number of deaths due to cause divided by the mid-year population.
<b>Continuous variable</b>	A population characteristic that is measured on a continuous scale (e.g., the mean level of blood pressure or body mass index).
<b>Covariate</b>	Covariates are variables that have a positive or negative impact on disease or conditions in GBD. For countries that contain little data, covariates are important part of helping fill in the gaps of missing information. For example, since there is not very much information collected on North Korea, from North Korea's GDP we can extract data on how much food is being produced and use that to make estimates on the amount of food being consumed by individuals.
<b>Deaths</b>	Deaths occurring in a population during a certain time period.
<b>Disability-adjusted life years (DALYs)</b>	The sum of years lost due to premature death (YLLs) and years lived with disability (YLDs). DALYs are also defined as years of healthy life lost.
<b>Etiology</b>	The cause, set of causes, or manner of causation of a disease or condition. For example, diarrhea is a cause in the GBD. Diarrhea itself has many causes (like norovirus). Diarrhea is the cause; norovirus is the etiology.
<b>Excess mortality rate</b>	The number of excess deaths divided by the number of prevalent cases. It is equivalent to the cause-specific mortality rate divided by prevalence.
<b>Expected value (life expectancy, deaths, YLLs, YLDs, DALYs)</b>	The value of a specified measure (life expectancy, deaths, YLLs, YLDs, or DALYs) that is expected for a particular GBD location and year, given its socio-demographic development status as measured by SDI.
<b>Fatal discontinuities</b>	An increase in the death rate of more than 1 per million, resulting from conflict and terrorism, natural disasters, major transport accidents or epidemics.
<b>Fertility</b>	The actual level of reproduction of a population, based on the number of live births that occur. Fertility is often measured in terms of women of childbearing age, defined as 15-49 years. GBD estimates fertility for females ages 10-54.
<b>Healthcare Access and Quality Index (HAQ)</b>	A summary measure of personal health care access and quality for a given location. HAQ is based on risk-standardized mortality rates from causes that, in the presence of high-quality health care, should not result in death – also known as amenable mortality.

<b>Term</b>	<b>Definition</b>
<b>Healthy life expectancy, or Health-adjusted life expectancy (HALE)</b>	The number of years that a person at a given age can expect to live in good health, if the rates of all-cause mortality and all-cause disability in a specified year of interest would remain constant into the future.
<b>Impairment</b>	Consequences (or sequelae) of multiple underlying causes for which the main source of data pertain to the sum of these across all causes. GBD currently measures 9 impairments: vision loss, hearing loss, anemia, heart failure, epilepsy, infertility, developmental intellectual disability, pelvic inflammatory disease and Guillain-Barré syndrome.
<b>Incidence</b>	The number of new cases of a given cause during a given period in a specified population. In the results tools it is expressed as the number of new cases in a year divided by the mid-year population size. In the analytical tool EpiViz, it is defined as the number of new cases among those not yet affected by the cause in the population.
<b>Injury n-codes (Injury by Nature)</b>	Injuries are classified into two dimensions: the cause of injury (e.g. road injury, fall or interpersonal violence) and the nature of injury ('n-code') that determines the bodily consequences of the injury (e.g. fracture or head injury). Causes of death are classified by cause of injury; disability is determined by the nature of injury.
<b>Life expectancy</b>	The number of years a person is expected to live at a given age assuming he or she will experience the age-specific mortality rate observed in a given year throughout his or her lifetime. For GBD, the life expectancy associated with an age group (e.g., 50- to 54-year-olds) is life expectancy at the starting year of the age group.
<b>Life expectancy (without fatal discontinuities or HIV)</b>	Life expectancy when the impact of fatal discontinuities or the HIV epidemic is removed.
<b>Life expectancy (without fatal discontinuities, with HIV)</b>	Life expectancy as estimated without including the impact of fatal discontinuities but including the HIV epidemic.
<b>Life expectancy decomposition</b>	Changes in life expectancy over time attributed to the causes of death that resulted in the changes in life expectancy.
<b>Life table</b>	A table which shows, for a person at each age, what the probability is that they die before their next birthday. Life tables are used to measure mortality, survivorship, and the life expectancy of a population at varying ages.
<b>Location</b>	Includes country, non-sovereign region, principal administrative unit of a country (e.g., state, province), GBD region, or other custom administrative division, such as World Bank Income Level or WHO region.
<b>Maternal mortality ratio (MMR)</b>	The number of maternal deaths per 100,000 live births. GBD defines maternal deaths as any death of a woman while pregnant or within one year of termination of pregnancy, irrespective of the duration and site of the pregnancy, from any cause related to or aggravated by the pregnancy or its management but not from accidental or incidental causes. Ages included range from 10 to 54 years.
<b>Measure</b>	The indicator for which estimates are produced.

<b>Term</b>	<b>Definition</b>
<b>Metric (Units)</b>	The unit by which a measure is expressed. E.g., number, percent, rate, etc.
<b>Other cause mortality rate</b>	The number of all-cause deaths minus deaths due to a specific cause divided by the mid-year population.
<b>Prevalence</b>	The proportion of people in a population who are a case of a disease, injury or sequela. All results in GBD refer to point prevalence.
<b>Probability of death</b>	The probability that a person dies during an interval of two ages (e.g., between birth and age 5), if the rates of all-cause mortality in a specified year of interest would remain constant into the future.
<b>Probability of death (without fatal discontinuities or HIV)</b>	The estimated probability of death without the impact of fatal discontinuities or the HIV epidemic.
<b>Probability of death (without fatal discontinuities, with HIV)</b>	The estimated probability of death without the impact of fatal discontinuities but including the HIV epidemic.
<b>Proportion</b>	The number of cases with a certain characteristic in a population (e.g., the proportion of HIV that is due to sexual transmission or the proportion of households using solid fuels for cooking).
<b>Relative risk</b>	The ratio of the mortality rate in the diseased and the mortality rate in the non-diseased population.
<b>Remission</b>	The number of cases that resolve or are cured per person-year of follow-up.
<b>Risk (Risk factor)</b>	An attribute, behavior, exposure, or other factor which is causally associated with an increased (or decreased) probability of a disease or injury. If the probability decreased, the risk is a protective factor.
<b>Sequela</b>	The non-fatal consequence of a disease or injury. In GBD, mutually exclusive sequelae are defined for each disease and injury that in a parsimonious manner quantify the consequences that cause disability or may lead to disability in the future.
<b>Sex</b>	Male, female or both sexes combined.
<b>Socio-demographic index (SDI)</b>	A compound measure of income, average years of schooling and fertility for each GBD location and year which is used as a measure of socio-demographic development.
<b>Standardized mortality ratio</b>	The mortality rate in the diseased compared to the mortality rate in the entire population.
<b>Summary exposure value (SEV)</b>	A measure of a population's exposure to a risk factor that takes into account the extent of exposure by risk level and the severity of that risk's contribution to disease burden. SEV takes the value zero when no excess risk for a population exists and the value one when the total population is at the highest level of risk; we report SEV on a scale from 0% to 100% to emphasize that it is risk-weighted prevalence.

Term	Definition
<b>Sustainable Development Goals (SDGs)</b>	The United Nations established, in September 2015, the Sustainable Development Goals (SDGs), which specify 17 universal goals, 169 targets, and 232 indicators leading up to 2030. Member countries adopted this set of goals to end poverty, protect the planet, and ensure prosperity for all. The GBD study estimates progress made by countries for 41 health-related SDG indicators.
<b>Uncertainty interval</b>	A range of values that reflects the certainty of an estimate. In GBD, every estimate is calculated 1,000 times, each time sampling from distributions rather than point estimates for data inputs, data transformations and model choice. The 95 <sup>th</sup> uncertainty interval is determined by the 25 <sup>th</sup> and 975 <sup>th</sup> value of the 1,000 values after ordering them from smallest to largest. Larger uncertainty intervals can result from limited data availability, small studies, and conflicting data, while smaller uncertainty intervals can result from extensive data availability, large studies, and data that are consistent across sources.
<b>Value</b>	The mean value of an estimate.
<b>With-condition mortality rate</b>	Total number of deaths among prevalent cases in a year of interest. It is equivalent to the sum of other cause mortality rate and cause-specific mortality rate.
<b>Year</b>	The period of 365 days (or 366 days in leap years) in the Gregorian calendar divided into 12 months beginning with January and ending with December.
<b>Years lived with disability (YLDs)</b>	Years lived with any short-term or long-term health loss weighted for severity by the disability weights.
<b>Years of life lost (YLLs)</b>	Years of life lost due to premature mortality. YLLs are the multiplication of deaths and a standard life expectancy at the age of death. The standard life expectancy is derived from a life table that contains the lowest observed mortality rate at each age that has been observed in any population greater than 5 million.

### Section 3: Tool Outputs and Indicators Overview

GBD 2017 Tool		GBD Results Tool	GBD Compare	MortViz	CoDViz	EpiViz	GHDx	GBD Data Input Sources
GBD Component	Mortality	X	X	X			X	X
	Population						X	X
	Fertility						X	X
	Causes of death	X	X		X		X	X
	Nonfatal health Outcomes	X	X			X	X	X
	Risk factors	X	X				X	X
	Covariates						X	X
	Sustainable Development Goals (SDGs)						X	X
Output	Estimates	X	X	X	X	X	X	
	Model input data			X	X	X		
	Data input sources							X
Dimension	Age group	X	X	X	X	X	X	X
	Cause	X	X		X	X	X	X
	Etiology	X	X					X
	Impairment	X	X			X		X
	Location	X	X	X	X	X	X	X
	Risk	X	X			X	X	X
	Sex	X	X	X	X	X	X	X
	Year	X	X	X	X	X	X	X
Measure / Indicator	Deaths	X	X	X	X			
	Disability-adjusted life years (DALYs)	X	X					
	Years lived with disability (YLDs)	X	X					
	Years of life lost (YLLs)	X	X					
	Prevalence	X	X			X		
	Incidence	X	X			X		
	Maternal mortality ratio (MMR)	X	X					
	Probability of death	X	X	X			X	
	Life expectancy	X	X	X			X	
	Health-adjusted life expectancy (HALE)	X	X					
	Summary exposure value (SEV)	X	X					
	Life expectancy decomposition		X					

GBD 2017 Tool		GBD Results Tool	GBD Compare	MortViz	CoDViz	EpiViz	GHDx	GBD Data Input Sources
Measure / Indicator	Expected value (life expectancy, deaths, YLLs, YLDs, DALYs)		X					
	Covariates						X	
	Population						X	
	Fertility						X	
	Development Goals (SDGs)						X	
	Life expectancy (without fatal discontinuities or HIV)			X			X	
	Life expectancy (without fatal discontinuities, with HIV)			X			X	
	Probability of death (without fatal discontinuities or HIV)			X			X	
	Probability of death (without fatal discontinuities, with HIV)			X			X	
	Sustainable Development Goals (SDGs)						X	
	Remission					X		
	Excess mortality rate					X		
	Standardized mortality ratio					X		
	With-condition mortality rate					X		
	All-cause mortality rate			X		X		
	Cause-specific mortality rate				X	X		
	Other cause mortality rate					X		
	Proportion					X		
	Continuous measure					X		

## Section 4: Dimension Values

This section contains numeric IDs and standardized names for the values included in each of the following dimensions. Both IDs and names come from an IHME database for dimensions shared among GBD components, projects, and tools. The IDs are created by the database and commonly appear in CSV downloads from the GBD Results Tool, MortViz, CoDViz, and EpiViz.

### 4.1 Age Group

**Please note:** the following list is an aggregate of all Age group values that appear in GBD online tools. No tool includes all the values listed. Population estimates, fertility estimates, and life tables provided in the GHDx include separate or additional age groups, including single year ages for population estimates and the full life tables.

Age Group ID	Age Group Name
1	Under 5 years
2	Early Neonatal [0-6 days]
3	Late Neonatal [7-27 days]
4	Post Neonatal [28-364 days]
5	1-4 years
6	5-9 years
7	10-14 years
8	15-19 years
9	20-24 years
10	25-29 years
11	30-34 years
12	35-39 years
13	40-44 years
14	45-49 years
15	50-54 years
16	55-59 years
17	60-64 years
18	65-69 years
19	70-74 years
20	75-79 years
21	80 plus
22	All ages
23	5-14 years
24	15-49 years
25	50-69 years
26	70+ years
27	Age-standardized
28	<1 year
30	80 to 84 year
31	85 to 89 years
32	90 to 94 years
33	95 to 99 years
44	100 to 104 years

Age Group ID	Age Group Name
45	105 to 109 years
148	110+ plus
155	15 to 60 years
158	<20 years
159	10 to 24 years
164	Birth
169	10 to 54 years
235	95+ years

## 4.2 Cause

Cause ID	Cause Name	Hierarchy
294	<b>All causes</b>	Total
295	<b>Communicable, maternal, neonatal, and nutritional diseases</b>	A
955	<b>HIV/AIDS and sexually transmitted infections</b>	A.1
298	<b>HIV/AIDS</b>	A.1.1
948	HIV/AIDS - Drug-susceptible Tuberculosis	A.1.1.1
949	HIV/AIDS - Multidrug-resistant Tuberculosis without extensive drug resistance	A.1.1.2
950	HIV/AIDS - Extensively drug-resistant Tuberculosis	A.1.1.3
300	HIV/AIDS resulting in other diseases	A.1.1.4
393	<b>Sexually transmitted infections excluding HIV</b>	A.1.2
394	Syphilis	A.1.2.1
395	Chlamydial infection	A.1.2.2
396	Gonococcal infection	A.1.2.3
397	Trichomoniasis	A.1.2.4
398	Genital herpes	A.1.2.5
399	Other sexually transmitted infections	A.1.2.6
956	<b>Respiratory infections and tuberculosis</b>	A.2
297	<b>Tuberculosis</b>	A.2.1
954	Latent tuberculosis infection	A.2.1.1
934	Drug-susceptible tuberculosis	A.2.1.2
946	Multidrug-resistant tuberculosis without extensive drug resistance	A.2.1.3
947	Extensively drug-resistant tuberculosis	A.2.1.4
322	Lower respiratory infections	A.2.2
328	Upper respiratory infections	A.2.3
329	Otitis media	A.2.4
957	<b>Enteric infections</b>	A.3
302	Diarrheal diseases	A.3.1
958	<b>Typhoid and paratyphoid</b>	A.3.2
319	Typhoid fever	A.3.2.1
320	Paratyphoid fever	A.3.2.2
959	Invasive Non-typhoidal Salmonella (iNTS)	A.3.3
321	Other intestinal infectious diseases	A.3.5

Cause ID	Cause Name	Hierarchy
344	<b>Neglected tropical diseases and malaria</b>	A.4
345	Malaria	A.4.1
346	Chagas disease	A.4.2
347	<b>Leishmaniasis</b>	A.4.3
348	Visceral leishmaniasis	A.4.3.1
349	Cutaneous and mucocutaneous leishmaniasis	A.4.3.2
350	African trypanosomiasis	A.4.4
351	Schistosomiasis	A.4.5
352	Cysticercosis	A.4.6
353	Cystic echinococcosis	A.4.7
354	Lymphatic filariasis	A.4.8
355	Onchocerciasis	A.4.9
356	Trachoma	A.4.10
357	Dengue	A.4.11
358	Yellow fever	A.4.12
359	Rabies	A.4.13
360	<b>Intestinal nematode infections</b>	A.4.14
361	Ascariasis	A.4.14.1
362	Trichuriasis	A.4.14.2
363	Hookworm disease	A.4.14.3
364	Food-borne trematodiasis	A.4.15
405	Leprosy	A.4.16
843	Ebola	A.4.17
935	Zika virus	A.4.18
936	Guinea worm disease	A.4.19
365	Other neglected tropical diseases	A.4.20
961	<b>Other infectious diseases</b>	A.5
332	<b>Meningitis</b>	A.5.1
333	Pneumococcal meningitis	A.5.1.1
334	H influenzae type B meningitis	A.5.1.2
335	Meningococcal meningitis	A.5.1.3
336	Other meningitis	A.5.1.4
337	Encephalitis	A.5.2
338	Diphtheria	A.5.3
339	Whooping cough	A.5.4
340	Tetanus	A.5.5
341	Measles	A.5.6
342	Varicella and herpes zoster	A.5.7
400	<b>Acute hepatitis</b>	A.5.8
401	Acute hepatitis A	A.5.8.1
402	Acute hepatitis B	A.5.8.2
403	Acute hepatitis C	A.5.8.3
404	Acute hepatitis E	A.5.8.4
408	Other unspecified infectious diseases	A.5.9
962	<b>Maternal and neonatal disorders</b>	A.6

Cause ID	Cause Name	Hierarchy
366	<b>Maternal disorders</b>	A.6.1
367	Maternal hemorrhage	A.6.1.1
368	Maternal sepsis and other maternal infections	A.6.1.2
369	Maternal hypertensive disorders	A.6.1.3
370	Maternal obstructed labor and uterine rupture	A.6.1.4
995	Maternal abortion and miscarriage	A.6.1.5
374	Ectopic pregnancy	A.6.1.6
375	Indirect maternal deaths	A.6.1.7
376	Late maternal deaths	A.6.1.8
741	Maternal deaths aggravated by HIV/AIDS	A.6.1.9
379	Other maternal disorders	A.6.1.10
380	<b>Neonatal disorders</b>	A.6.2
381	Neonatal preterm birth	A.6.2.1
382	Neonatal encephalopathy due to birth asphyxia and trauma	A.6.2.2
383	Neonatal sepsis and other neonatal infections	A.6.2.3
384	Hemolytic disease and other neonatal jaundice	A.6.2.4
385	Other neonatal disorders	A.6.2.5
386	<b>Nutritional deficiencies</b>	A.7
387	Protein-energy malnutrition	A.7.1
388	Iodine deficiency	A.7.2
389	Vitamin A deficiency	A.7.3
390	Dietary iron deficiency	A.7.4
391	Other nutritional deficiencies	A.7.5
409	<b>Non-communicable diseases</b>	B
410	<b>Neoplasms</b>	B.1
444	Lip and oral cavity cancer	B.1.1
447	Nasopharynx cancer	B.1.2
450	Other pharynx cancer	B.1.3
411	Esophageal cancer	B.1.4
414	Stomach cancer	B.1.5
441	Colon and rectum cancer	B.1.6
417	<b>Liver cancer</b>	B.1.7
418	Liver cancer due to hepatitis B	B.1.7.1
419	Liver cancer due to hepatitis C	B.1.7.2
420	Liver cancer due to alcohol use	B.1.7.3
996	Liver cancer due to NASH	B.1.7.4
421	Liver cancer due to other causes	B.1.7.5
453	Gallbladder and biliary tract cancer	B.1.8
456	Pancreatic cancer	B.1.9
423	Larynx cancer	B.1.10
426	Tracheal, bronchus, and lung cancer	B.1.11
459	Malignant skin melanoma	B.1.12
462	<b>Non-melanoma skin cancer</b>	B.1.13
849	Non-melanoma skin cancer (squamous-cell carcinoma)	B.1.13.1

Cause ID	Cause Name	Hierarchy
850	Non-melanoma skin cancer (basal-cell carcinoma)	B.1.13.2
429	Breast cancer	B.1.14
432	Cervical cancer	B.1.15
435	Uterine cancer	B.1.16
465	Ovarian cancer	B.1.17
438	Prostate cancer	B.1.18
468	Testicular cancer	B.1.19
471	Kidney cancer	B.1.20
474	Bladder cancer	B.1.21
477	Brain and nervous system cancer	B.1.22
480	Thyroid cancer	B.1.23
483	Mesothelioma	B.1.24
484	Hodgkin lymphoma	B.1.25
485	Non-Hodgkin lymphoma	B.1.26
486	Multiple myeloma	B.1.27
487	<b>Leukemia</b>	B.1.28
845	Acute lymphoid leukemia	B.1.28.1
846	Chronic lymphoid leukemia	B.1.28.2
847	Acute myeloid leukemia	B.1.28.3
848	Chronic myeloid leukemia	B.1.28.4
943	Other leukemia	B.1.28.5
489	Other malignant neoplasms	B.1.29
490	<b>Other neoplasms</b>	B.1.30
964	Myelodysplastic, myeloproliferative, and other hematopoietic neoplasms	B.1.30.1
965	Benign and in situ intestinal neoplasms	B.1.30.2
966	Benign and in situ cervical and uterine neoplasms	B.1.30.3
967	Other benign and in situ neoplasms	B.1.30.4
491	<b>Cardiovascular diseases</b>	B.2
492	Rheumatic heart disease	B.2.1
493	Ischemic heart disease	B.2.2
494	<b>Stroke</b>	B.2.3
495	Ischemic stroke	B.2.3.1
496	Intracerebral hemorrhage	B.2.3.2
497	Subarachnoid hemorrhage	B.2.3.3
498	Hypertensive heart disease	B.2.4
504	<b>Non-rheumatic valvular heart disease</b>	B.2.5
968	Non-rheumatic calcific aortic valve disease	B.2.5.1
969	Non-rheumatic degenerative mitral valve disease	B.2.5.2
970	Other non-rheumatic valve diseases	B.2.5.3
499	<b>Cardiomyopathy and myocarditis</b>	B.2.6
942	Myocarditis	B.2.6.1
938	Alcoholic cardiomyopathy	B.2.6.2
944	Other cardiomyopathy	B.2.6.3
500	Atrial fibrillation and flutter	B.2.7

Cause ID	Cause Name	Hierarchy
501	Aortic aneurysm	B.2.8
502	Peripheral artery disease	B.2.9
503	Endocarditis	B.2.10
507	Other cardiovascular and circulatory diseases	B.2.11
508	<b>Chronic respiratory diseases</b>	B.3
509	Chronic obstructive pulmonary disease	B.3.1
510	<b>Pneumoconiosis</b>	B.3.2
511	Silicosis	B.3.2.1
512	Asbestosis	B.3.2.2
513	Coal workers pneumoconiosis	B.3.2.3
514	Other pneumoconiosis	B.3.2.4
515	Asthma	B.3.3
516	Interstitial lung disease and pulmonary sarcoidosis	B.3.4
520	Other chronic respiratory diseases	B.3.5
526	<b>Digestive diseases</b>	B.4
521	<b>Cirrhosis and other chronic liver diseases</b>	B.4.1
522	Cirrhosis and other chronic liver diseases due to hepatitis B	B.4.1.1
523	Cirrhosis and other chronic liver diseases due to hepatitis C	B.4.1.2
524	Cirrhosis and other chronic liver diseases due to alcohol use	B.4.1.3
971	Cirrhosis due to NASH	B.4.1.4
525	Cirrhosis and other chronic liver diseases due to other causes	B.4.1.5
992	<b>Upper digestive system diseases</b>	B.4.2
527	Peptic ulcer disease	B.4.2.1
528	Gastritis and duodenitis	B.4.2.2
536	Gastroesophageal reflux disease	B.4.2.3
529	Appendicitis	B.4.3
530	Paralytic ileus and intestinal obstruction	B.4.4
531	Inguinal, femoral, and abdominal hernia	B.4.5
532	Inflammatory bowel disease	B.4.6
533	Vascular intestinal disorders	B.4.7
534	Gallbladder and biliary diseases	B.4.8
535	Pancreatitis	B.4.9
541	Other digestive diseases	B.4.10
542	<b>Neurological disorders</b>	B.5
543	Alzheimer's disease and other dementias	B.5.1
544	Parkinson's disease	B.5.2
545	Epilepsy	B.5.3
546	Multiple sclerosis	B.5.4
554	Motor neuron disease	B.5.5
972	<b>Headache disorders</b>	B.5.6
547	Migraine	B.5.6.1
548	Tension-type headache	B.5.6.2
557	Other neurological disorders	B.5.7

Cause ID	Cause Name	Hierarchy
558	<b>Mental disorders</b>	B.6
559	Schizophrenia	B.6.1
567	<b>Depressive disorders</b>	B.6.2
568	Major depressive disorder	B.6.2.1
569	Dysthymia	B.6.2.2
570	Bipolar disorder	B.6.3
571	Anxiety disorders	B.6.4
572	<b>Eating disorders</b>	B.6.5
573	Anorexia nervosa	B.6.5.1
574	Bulimia nervosa	B.6.5.2
575	Autism spectrum disorders	B.6.6
578	Attention-deficit/hyperactivity disorder	B.6.7
579	Conduct disorder	B.6.8
582	Idiopathic developmental intellectual disability	B.6.9
585	Other mental disorders	B.6.10
973	<b>Substance use disorders</b>	B.7
560	Alcohol use disorders	B.7.1
561	<b>Drug use disorders</b>	B.7.2
562	Opioid use disorders	B.7.2.1
563	Cocaine use disorders	B.7.2.2
564	Amphetamine use disorders	B.7.2.3
565	Cannabis use disorders	B.7.2.4
566	Other drug use disorders	B.7.2.5
974	<b>Diabetes and kidney diseases</b>	B.8
587	<b>Diabetes mellitus</b>	B.8.1
975	Diabetes mellitus type 1	B.8.1.1
976	Diabetes mellitus type 2	B.8.1.2
589	<b>Chronic kidney disease</b>	B.8.2
997	Chronic kidney disease due to diabetes mellitus type 1	B.8.2.1
998	Chronic kidney disease due to diabetes mellitus type 2	B.8.2.2
591	Chronic kidney disease due to hypertension	B.8.2.3
592	Chronic kidney disease due to glomerulonephritis	B.8.2.4
593	Chronic kidney disease due to other and unspecified causes	B.8.2.5
588	Acute glomerulonephritis	B.8.3
653	<b>Skin and subcutaneous diseases</b>	B.9
654	<b>Dermatitis</b>	B.9.1
977	Atopic dermatitis	B.9.1.1
978	Contact dermatitis	B.9.1.2
979	Seborrhoeic dermatitis	B.9.1.3
655	Psoriasis	B.9.2
980	<b>Bacterial skin diseases</b>	B.9.3
656	Cellulitis	B.9.3.1
657	Pyoderma	B.9.3.2
658	Scabies	B.9.4

Cause ID	Cause Name	Hierarchy
659	Fungal skin diseases	B.9.5
660	Viral skin diseases	B.9.6
661	Acne vulgaris	B.9.7
662	Alopecia areata	B.9.8
663	Pruritus	B.9.9
664	Urticaria	B.9.10
665	Decubitus ulcer	B.9.11
668	Other skin and subcutaneous diseases	B.9.12
669	<b>Sense organ diseases</b>	B.10
981	<b>Blindness and vision impairment</b>	B.10.1
670	Glaucoma	B.10.1.1
671	Cataract	B.10.1.2
672	Age-related macular degeneration	B.10.1.3
999	Refraction disorders	B.10.1.4
1000	Near vision loss	B.10.1.5
675	Other vision loss	B.10.1.6
674	Age-related and other hearing loss	B.10.2
679	Other sense organ diseases	B.10.3
626	<b>Musculoskeletal disorders</b>	B.11
627	Rheumatoid arthritis	B.11.1
628	Osteoarthritis	B.11.2
630	Low back pain	B.11.3
631	Neck pain	B.11.4
632	Gout	B.11.5
639	Other musculoskeletal disorders	B.11.6
640	<b>Other non-communicable diseases</b>	B.12
641	<b>Congenital birth defects</b>	B.12.1
642	Neural tube defects	B.12.1.1
643	Congenital heart anomalies	B.12.1.2
644	Orofacial clefts	B.12.1.3
645	Down syndrome	B.12.1.4
646	Turner syndrome	B.12.1.5
647	Klinefelter syndrome	B.12.1.6
648	Other chromosomal abnormalities	B.12.1.7
649	Congenital musculoskeletal and limb anomalies	B.12.1.8
650	Urogenital congenital anomalies	B.12.1.9
651	Digestive congenital anomalies	B.12.1.10
652	Other congenital birth defects	B.12.1.11
594	<b>Urinary diseases and male infertility</b>	B.12.2
595	Urinary tract infections	B.12.2.1
596	Urolithiasis	B.12.2.2
597	Benign prostatic hyperplasia	B.12.2.3
598	Male infertility	B.12.2.4
602	Other urinary diseases	B.12.2.5
603	<b>Gynecological diseases</b>	B.12.3

Cause ID	Cause Name	Hierarchy
604	Uterine fibroids	B.12.3.1
605	Polycystic ovarian syndrome	B.12.3.2
606	Female infertility	B.12.3.3
607	Endometriosis	B.12.3.4
608	Genital prolapse	B.12.3.5
609	Premenstrual syndrome	B.12.3.6
612	Other gynecological diseases	B.12.3.7
613	<b>Hemoglobinopathies and hemolytic anemias</b>	B.12.4
614	Thalassemias	B.12.4.1
837	Thalassemias trait	B.12.4.2
615	Sickle cell disorders	B.12.4.3
838	Sickle cell trait	B.12.4.4
616	G6PD deficiency	B.12.4.5
839	G6PD trait	B.12.4.6
618	Other hemoglobinopathies and hemolytic anemias	B.12.4.7
619	Endocrine, metabolic, blood, and immune disorders	B.12.5
680	<b>Oral disorders</b>	B.12.6
681	Caries of deciduous teeth	B.12.6.1
682	Caries of permanent teeth	B.12.6.2
683	Periodontal diseases	B.12.6.3
684	Edentulism and severe tooth loss	B.12.6.4
685	Other oral disorders	B.12.6.5
686	Sudden infant death syndrome	B.12.7
687	Injuries	C
688	<b>Transport injuries</b>	C.1
689	<b>Road injuries</b>	C.1.1
690	Pedestrian road injuries	C.1.1.1
691	Cyclist road injuries	C.1.1.2
692	Motorcyclist road injuries	C.1.1.3
693	Motor vehicle road injuries	C.1.1.4
694	Other road injuries	C.1.1.5
695	Other transport injuries	C.1.2
696	<b>Unintentional injuries</b>	C.2
697	Falls	C.2.1
698	Drowning	C.2.2
699	Fire, heat, and hot substances	C.2.3
700	<b>Poisonings</b>	C.2.4
701	Poisoning by carbon monoxide	C.2.4.1
703	Poisoning by other means	C.2.4.2
704	<b>Exposure to mechanical forces</b>	C.2.5
705	Unintentional firearm injuries	C.2.5.1
707	Other exposure to mechanical forces	C.2.5.2
708	Adverse effects of medical treatment	C.2.6
709	<b>Animal contact</b>	C.2.7
710	Venomous animal contact	C.2.7.1

Cause ID	Cause Name	Hierarchy
711	Non-venomous animal contact	C.2.7.2
712	<b>Foreign body</b>	C.2.8
713	Pulmonary aspiration and foreign body in airway	C.2.8.1
714	Foreign body in eyes	C.2.8.2
715	Foreign body in other body part	C.2.8.3
842	Environmental heat and cold exposure	C.2.9
729	Exposure to forces of nature	C.2.10
716	Other unintentional injuries	C.2.11
717	<b>Self-harm and interpersonal violence</b>	C.3
718	<b>Self-harm</b>	C.3.1
721	Self-harm by firearm	C.3.1.1
723	Self-harm by other specified means	C.3.1.2
724	<b>Interpersonal violence</b>	C.3.2
725	Physical violence by firearm	C.3.2.1
726	Physical violence by sharp object	C.3.2.2
941	Sexual violence	C.3.2.3
727	Physical violence by other means	C.3.2.4
945	Conflict and terrorism	C.3.3

### 4.3 Etiology

Etiology ID	Etiology Name
171	<b>Etiologies</b>
172	<b>Diarrheal disease etiologies</b>
173	Cholera
174	Non-typhoidal Salmonella
175	Shigella
176	Enteropathogenic E coli infection
177	Enterotoxigenic E coli infection
178	Campylobacter
179	Entamoeba
180	Cryptosporidium
181	Rotavirus
182	Aeromonas
183	Clostridium difficile
184	Norovirus
185	Adenovirus
186	<b>Lower respiratory infection etiologies</b>
187	Influenza
188	Pneumococcal pneumonia
189	H influenzae type B pneumonia
190	Respiratory syncytial virus

#### 4.4 Impairment

Impairment ID	Impairment Name
191	<b>Impairments</b>
192	<b>Anemia</b>
205	Mild anemia
206	Moderate anemia
207	Severe anemia
193	<b>Epilepsy</b>
208	Treated epilepsy
209	Moderate epilepsy
210	Severe epilepsy
194	<b>Guillain-Barré syndrome</b>
195	<b>Hearing loss</b>
211	Mild hearing loss
212	Moderate hearing loss
213	Moderately severe hearing loss
214	Severe hearing loss
215	Profound hearing loss
216	Complete hearing loss
196	<b>Heart failure</b>
217	Mild heart failure
218	Moderate heart failure
219	Severe heart failure
379	Treated heart failure
198	<b>Infertility</b>
220	Primary infertility
221	Secondary infertility
197	<b>Developmental intellectual disability</b>
236	Borderline intellectual disability
222	Mild intellectual disability
223	Moderate intellectual disability
224	Severe intellectual disability
225	Profound intellectual disability
199	<b>Pelvic inflammatory disease</b>
226	Moderate pelvic inflammatory disease
227	Severe pelvic inflammatory disease
200	<b>Blindness and vision impairment</b>
228	Mild vision loss
229	Moderate vision loss
230	Severe vision loss
231	Blindness
232	Monocular vision loss
233	Presbyopia

#### 4.5 Injury by Nature [Injury n-code]

Injury ID	Injury Name
362	<b>Injuries</b>
298	<b>Amputations</b>
250	Amputation of lower limbs, bilateral
261	Amputation of upper limbs, bilateral
272	Amputation of fingers (excluding thumb)
283	Amputation of lower limb, unilateral
293	Amputation of upper limb, unilateral
294	Amputation of thumb
295	Amputation of toe/toes
299	<b>Burns</b>
251	Lower airway burns
296	Burns, <20% total burned surface area without lower airway burns
297	Burns, >=20% total burned surface area or >= 10% burned surface area if head/neck or hands/wrist involved w/o lower airway burns
300	<b>Fractures</b>
256	Fracture of clavicle, scapula, or humerus
257	Fracture of face bones
258	Fracture of foot bones except ankle
259	Fracture of hand (wrist and other distal part of hand)
260	Fracture of hip
262	Fracture of patella, tibia or fibula, or ankle
263	Fracture of pelvis
264	Fracture of radius and/or ulna
265	Fracture of skull
266	Fracture of sternum and/or fracture of one or more ribs
267	Fracture of vertebral column
268	Fracture of femur, other than femoral neck
301	<b>Head Injuries</b>
269	Minor TBI
270	Moderate/Severe TBI
302	<b>Spinal Injuries</b>
276	Spinal cord lesion at neck level
277	Spinal cord lesion below neck level
303	<b>Minor Injuries</b>
255	Muscle and tendon injuries, including sprains and strains lesser dislocations
273	Foreign body in ear
284	Open wound(s)
288	Contusion in any part of the body
291	Superficial injury of any part of the body
304	<b>Other Injuries</b>
252	Dislocation of hip
253	Dislocation of knee

254	Dislocation of shoulder
274	Foreign body in respiratory system
275	Foreign body in GI and urogenital system
278	Drowning and nonfatal submersion
279	Asphyxiation
280	Crush injury
281	Nerve injury
282	Injury to eyes
285	Poisoning requiring urgent care
286	Severe chest Injury
287	Internal hemorrhage in abdomen and pelvis
289	Effect of different environmental factors
290	Complications following therapeutic procedures
292	Multiple fractures, dislocations, crashes, wounds, pains, and strains

## 4.5 Location

### Notes on Location Type:

- **Region** and **Super region** are not actual geopolitical units but groupings of countries created for analytical purposes by GBD. Region also indicates **Custom regions** such as WHO regions and OECD countries.
- **Subnational** typically represents the first-order administrative division of a country, such as a province in China or state in the United States, though it can represent a custom analytical unit, such as “Sweden without Stockholm,” or a more granular political unit, such as a second- or third-order country administrative division.
- **Subnational locations** for which **GBD 2017 results** are currently available in the tools (this list will be updated as results for additional subnational locations are released):
  - **Brazil:** 27 states
  - **Indonesia:** 29 provinces and 5 autonomous regions
  - **Japan:** 47 prefectures
  - **Mexico:** 31 states and Mexico City (the Federal District)
  - **Sweden:** 2 regions: Stockholm, and Sweden without Stockholm
  - **United Kingdom:**
    - 4 nations of the UK: England, Northern Ireland, Scotland, and Wales
    - 9 regions of England
  - **United States:** 50 states and the District of Columbia

Location ID	Location Name	Location Type
1	<b>Global</b>	Global
44635	High SDI	Region
44634	High-middle SDI	Region
44639	Middle SDI	Region
44636	Low-middle SDI	Region
44637	Low SDI	Region
31	<b>Central Europe, Eastern Europe, and Central Asia</b>	Super region

Location ID	Location Name	Location Type
32	<b>Central Asia</b>	Region
33	Armenia	Country
34	Azerbaijan	Country
35	Georgia	Country
36	Kazakhstan	Country
37	Kyrgyzstan	Country
38	Mongolia	Country
39	Tajikistan	Country
40	Turkmenistan	Country
41	Uzbekistan	Country
42	<b>Central Europe</b>	Region
43	Albania	Country
44	Bosnia and Herzegovina	Country
45	Bulgaria	Country
46	Croatia	Country
47	Czech Republic	Country
48	Hungary	Country
49	Macedonia	Country
50	Montenegro	Country
51	Poland	Country
52	Romania	Country
53	Serbia	Country
54	Slovakia	Country
55	Slovenia	Country
56	<b>Eastern Europe</b>	Region
57	Belarus	Country
58	Estonia	Country
59	Latvia	Country
60	Lithuania	Country
61	Moldova	Country
62	Russia	Country
63	Ukraine	Country
64	<b>High-income</b>	Super region
70	<b>Australasia</b>	Region
71	Australia	Country
72	New Zealand	Country
65	<b>High-income Asia Pacific</b>	Region
66	Brunei	Country
67	<b>Japan</b>	Country
35446	Aichi	Subnational
35428	Akita	Subnational
35425	Aomori	Subnational
35435	Chiba	Subnational
35461	Ehime	Subnational
35441	Fukui	Subnational

Location ID	Location Name	Location Type
35463	Fukuoka	Subnational
35430	Fukushima	Subnational
35444	Gifu	Subnational
35433	Gunma	Subnational
35457	Hiroshima	Subnational
35424	Hokkaidō	Subnational
35451	Hyōgo	Subnational
35431	Ibaraki	Subnational
35440	Ishikawa	Subnational
35426	Iwate	Subnational
35460	Kagawa	Subnational
35469	Kagoshima	Subnational
35437	Kanagawa	Subnational
35462	Kōchi	Subnational
35466	Kumamoto	Subnational
35449	Kyōto	Subnational
35447	Mie	Subnational
35427	Miyagi	Subnational
35468	Miyazaki	Subnational
35443	Nagano	Subnational
35465	Nagasaki	Subnational
35452	Nara	Subnational
35438	Niigata	Subnational
35467	Ōita	Subnational
35456	Okayama	Subnational
35470	Okinawa	Subnational
35450	Ōsaka	Subnational
35464	Saga	Subnational
35434	Saitama	Subnational
35448	Shiga	Subnational
35455	Shimane	Subnational
35445	Shizuoka	Subnational
35432	Tochigi	Subnational
35459	Tokushima	Subnational
35436	Tōkyō	Subnational
35454	Tottori	Subnational
35439	Toyama	Subnational
35453	Wakayama	Subnational
35429	Yamagata	Subnational
35458	Yamaguchi	Subnational
35442	Yamanashi	Subnational
69	Singapore	Country
68	South Korea	Country
100	<b>High-income North America</b>	Region
101	Canada	Country

Location ID	Location Name	Location Type
349	Greenland	Territory
102	<b>United States</b>	Country
523	Alabama	Subnational
524	Alaska	Subnational
525	Arizona	Subnational
526	Arkansas	Subnational
527	California	Subnational
528	Colorado	Subnational
529	Connecticut	Subnational
530	Delaware	Subnational
531	District of Columbia	Subnational
532	Florida	Subnational
533	Georgia	Subnational
534	Hawaii	Subnational
535	Idaho	Subnational
536	Illinois	Subnational
537	Indiana	Subnational
538	Iowa	Subnational
539	Kansas	Subnational
540	Kentucky	Subnational
541	Louisiana	Subnational
542	Maine	Subnational
543	Maryland	Subnational
544	Massachusetts	Subnational
545	Michigan	Subnational
546	Minnesota	Subnational
547	Mississippi	Subnational
548	Missouri	Subnational
549	Montana	Subnational
550	Nebraska	Subnational
551	Nevada	Subnational
552	New Hampshire	Subnational
553	New Jersey	Subnational
554	New Mexico	Subnational
555	New York	Subnational
556	North Carolina	Subnational
557	North Dakota	Subnational
558	Ohio	Subnational
559	Oklahoma	Subnational
560	Oregon	Subnational
561	Pennsylvania	Subnational
562	Rhode Island	Subnational
563	South Carolina	Subnational
564	South Dakota	Subnational
565	Tennessee	Subnational

Location ID	Location Name	Location Type
566	Texas	Subnational
567	Utah	Subnational
568	Vermont	Subnational
569	Virginia	Subnational
570	Washington	Subnational
571	West Virginia	Subnational
572	Wisconsin	Subnational
573	Wyoming	Subnational
96	<b>Southern Latin America</b>	Region
97	Argentina	Country
98	Chile	Country
99	Uruguay	Country
73	<b>Western Europe</b>	Region
74	Andorra	Country
75	Austria	Country
76	Belgium	Country
77	Cyprus	Country
78	Denmark	Country
79	Finland	Country
80	France	Country
81	Germany	Country
82	Greece	Country
83	Iceland	Country
84	Ireland	Country
85	Israel	Country
86	Italy	Country
87	Luxembourg	Country
88	Malta	Country
89	Netherlands	Country
90	Norway	Country
91	Portugal	Country
92	Spain	Country
93	<b>Sweden</b>	Country
4944	Stockholm	Subnational
4940	Sweden except Stockholm	Subnational
94	Switzerland	Country
95	<b>United Kingdom</b>	Country
4749	<b>England</b>	Subnational
4621	East Midlands	Subnational
4623	East of England	Subnational
4624	Greater London	Subnational
4618	North East England	Subnational
4619	North West England	Subnational
4625	South East England	Subnational
4626	South West England	Subnational

Location ID	Location Name	Location Type
4622	West Midlands	Subnational
4620	Yorkshire and the Humber	Subnational
433	Northern Ireland	Subnational
434	Scotland	Subnational
4636	Wales	Subnational
103	<b>Latin America and Caribbean</b>	Super region
120	<b>Andean Latin America</b>	Region
121	Bolivia	Country
122	Ecuador	Country
123	Peru	Country
104	<b>Caribbean</b>	Region
105	Antigua and Barbuda	Country
106	The Bahamas	Country
107	Barbados	Country
108	Belize	Country
305	Bermuda	Territory
109	Cuba	Country
110	Dominica	Country
111	Dominican Republic	Country
112	Grenada	Country
113	Guyana	Country
114	Haiti	Country
115	Jamaica	Country
385	Puerto Rico	Territory
116	Saint Lucia	Country
117	Saint Vincent and the Grenadines	Country
118	Suriname	Country
119	Trinidad and Tobago	Country
422	Virgin Islands, U.S.	Territory
124	<b>Central Latin America</b>	Region
125	Colombia	Country
126	Costa Rica	Country
127	El Salvador	Country
128	Guatemala	Country
129	Honduras	Country
130	<b>Mexico</b>	Country
4643	Aguascalientes	Subnational
4644	Baja California	Subnational
4645	Baja California Sur	Subnational
4646	Campeche	Subnational
4649	Chiapas	Subnational
4650	Chihuahua	Subnational
4647	Coahuila	Subnational
4648	Colima	Subnational
4651	Mexico City [Distrito Federal]	Subnational

Location ID	Location Name	Location Type
4652	Durango	Subnational
4653	Guanajuato	Subnational
4654	Guerrero	Subnational
4655	Hidalgo	Subnational
4656	Jalisco	Subnational
4657	México	Subnational
4658	Michoacán de Ocampo	Subnational
4659	Morelos	Subnational
4660	Nayarit	Subnational
4661	Nuevo León	Subnational
4662	Oaxaca	Subnational
4663	Puebla	Subnational
4664	Querétaro	Subnational
4665	Quintana Roo	Subnational
4666	San Luis Potosí	Subnational
4667	Sinaloa	Subnational
4668	Sonora	Subnational
4669	Tabasco	Subnational
4670	Tamaulipas	Subnational
4671	Tlaxcala	Subnational
4672	Veracruz de Ignacio de la Llave	Subnational
4673	Yucatán	Subnational
4674	Zacatecas	Subnational
131	Nicaragua	Country
132	Panama	Country
133	Venezuela	Country
134	<b>Tropical Latin America</b>	Region
135	<b>Brazil</b>	Country
4750	Acre	Subnational
4751	Alagoas	Subnational
4753	Amapá	Subnational
4752	Amazonas	Subnational
4754	Bahia	Subnational
4755	Ceará	Subnational
4756	Distrito Federal	Subnational
4757	Espírito Santo	Subnational
4758	Goiás	Subnational
4759	Maranhão	Subnational
4762	Mato Grosso	Subnational
4761	Mato Grosso do Sul	Subnational
4760	Minas Gerais	Subnational
4763	Pará	Subnational
4764	Paraíba	Subnational
4765	Paraná	Subnational
4766	Pernambuco	Subnational

Location ID	Location Name	Location Type
4767	Piauí	Subnational
4768	Rio de Janeiro	Subnational
4769	Rio Grande do Norte	Subnational
4772	Rio Grande do Sul	Subnational
4770	Rondônia	Subnational
4771	Roraima	Subnational
4773	Santa Catarina	Subnational
4775	São Paulo	Subnational
4774	Sergipe	Subnational
4776	Tocantins	Subnational
136	Paraguay	Country
137	<b>North Africa and Middle East</b>	Super region
138	<b>North Africa and Middle East</b>	Region
160	Afghanistan	Country
139	Algeria	Country
140	Bahrain	Country
141	Egypt	Country
142	Iran	Country
143	Iraq	Country
144	Jordan	Country
145	Kuwait	Country
146	Lebanon	Country
147	Libya	Country
148	Morocco	Country
149	Palestine	Country
150	Oman	Country
151	Qatar	Country
152	Saudi Arabia	Country
522	Sudan	Country
153	Syria	Country
154	Tunisia	Country
155	Turkey	Country
156	United Arab Emirates	Country
157	Yemen	Country
158	<b>South Asia</b>	Super region
159	<b>South Asia</b>	Region
161	Bangladesh	Country
162	Bhutan	Country
163	India	Country
164	Nepal	Country
165	Pakistan	Country
4	<b>Southeast Asia, East Asia, and Oceania</b>	Super region
5	<b>East Asia</b>	Region
6	China	Country
7	North Korea	Country

Location ID	Location Name	Location Type
8	Taiwan	Country
21	<b>Oceania</b>	Region
298	American Samoa	Territory
25	Federated States of Micronesia	Country
22	Fiji	Country
351	Guam	Territory
23	Kiribati	Country
24	Marshall Islands	Country
376	Northern Mariana Islands	Territory
26	Papua New Guinea	Country
27	Samoa	Country
28	Solomon Islands	Country
29	Tonga	Country
30	Vanuatu	Country
9	<b>Southeast Asia</b>	Region
10	Cambodia	Country
11	Indonesia	Country
4709	Aceh	Subnational
4726	Bali	Subnational
4717	Bangka-Belitung Islands	Subnational
4725	Banten	Subnational
4715	Bengkulu	Subnational
4737	Gorontalo	Subnational
4720	Jakarta	Subnational
4713	Jambi	Subnational
4721	West Java	Subnational
4722	Central Java	Subnational
4724	East Java	Subnational
4729	West Kalimantan	Subnational
4731	South Kalimantan	Subnational
4730	Central Kalimantan	Subnational
4732	East Kalimantan	Subnational
4719	North Kalimantan	Subnational
4718	Riau Islands	Subnational
4716	Lampung	Subnational
4739	Maluku	Subnational
4740	North Maluku	Subnational
4727	West Nusa Tenggara	Subnational
4728	East Nusa Tenggara	Subnational
4742	Papua	Subnational
4741	West Papua	Subnational
4712	Riau	Subnational
4738	West Sulawesi	Subnational
4735	South Sulawesi	Subnational
4734	Central Sulawesi	Subnational

Location ID	Location Name	Location Type
4736	Southeast Sulawesi	Subnational
4733	North Sulawesi	Subnational
4711	West Sumatra	Subnational
4714	South Sumatra	Subnational
4710	North Sumatra	Subnational
4723	Yogyakarta	Subnational
12	Laos	Country
13	Malaysia	Country
14	Maldives	Country
183	Mauritius	Country
15	Myanmar	Country
16	Philippines	Country
17	Sri Lanka	Country
186	Seychelles	Country
18	Thailand	Country
19	Timor-Leste	Country
20	Vietnam	Country
166	<b>Sub-Saharan Africa</b>	Super region
167	<b>Central Sub-Saharan Africa</b>	Region
168	Angola	Country
169	Central African Republic	Country
170	Congo	Country
171	Democratic Republic of the Congo	Country
172	Equatorial Guinea	Country
173	Gabon	Country
174	<b>Eastern Sub-Saharan Africa</b>	Region
175	Burundi	Country
176	Comoros	Country
177	Djibouti	Country
178	Eritrea	Country
179	Ethiopia	Country
180	Kenya	Country
181	Madagascar	Country
182	Malawi	Country
184	Mozambique	Country
185	Rwanda	Country
187	Somalia	Country
435	South Sudan	Country
189	Tanzania	Country
190	Uganda	Country
191	Zambia	Country
192	<b>Southern Sub-Saharan Africa</b>	Region
193	Botswana	Country
194	Lesotho	Country
195	Namibia	Country

Location ID	Location Name	Location Type
196	South Africa	Country
197	Swaziland	Country
198	Zimbabwe	Country
199	<b>Western Sub-Saharan Africa</b>	Region
200	Benin	Country
201	Burkina Faso	Country
202	Cameroon	Country
203	Cape Verde	Country
204	Chad	Country
205	Cote d'Ivoire	Country
206	The Gambia	Country
207	Ghana	Country
208	Guinea	Country
209	Guinea-Bissau	Country
210	Liberia	Country
211	Mali	Country
212	Mauritania	Country
213	Niger	Country
214	Nigeria	Country
215	Sao Tome and Principe	Country
216	Senegal	Country
217	Sierra Leone	Country
218	Togo	Country
44587	<b>African Union</b>	Region
44534	<b>Commonwealth</b>	Region
44535	Commonwealth High Income	Region
44536	Commonwealth Middle Income	Region
44537	Commonwealth Low Income	Region
4743	<b>European Union</b>	Region
44590	<b>Four World Regions</b>	Region
44559	Africa	Region
44560	America	Region
44561	Asia	Region
44562	Europe	Region
44586	<b>G20</b>	Region
44642	<b>Nordic Region</b>	Region
44584	<b>OECD Countries</b>	Region
479	<b>WHO region</b>	Region
44563	African Region	Region
44567	Eastern Mediterranean Region	Region
44566	European Region	Region
44564	Region of the Americas	Region
44565	South-East Asia Region	Region
44568	Western Pacific Region	Region
44591	<b>World Bank Income Levels</b>	Region

Location ID	Location Name	Location Type
44575	World Bank High Income	Region
44578	World Bank Low Income	Region
44577	World Bank Lower Middle Income	Region
44576	World Bank Upper Middle Income	Region
478	<b>World Bank Regions</b>	Region
239	East Asia & Pacific - WB	Region
240	Europe & Central Asia - WB	Region
241	Latin America & Caribbean - WB	Region
243	Middle East & North Africa - WB	Region
44638	North America	Region
244	South Asia - WB	Region
242	Sub-Saharan Africa - WB	Region

#### 4.6 Measure

Measure ID	Measure Name
1	Deaths
2	DALYs (Disability-adjusted life years)
3	YLDs (Years lived with disability)
4	YLLs (Years of life lost)
5	Prevalence
6	Incidence
7	Remission
9	Excess mortality rate
12	Standardized mortality ratio
13	With-condition mortality rate
14	All-cause mortality rate
15	Cause-specific mortality rate
16	Other cause mortality rate
18	Proportion
19	Continuous
25	Maternal mortality ratio
26	Life expectancy
27	Probability of death
28	HALE (Healthy life expectancy)
29	Summary exposure value
30	Life expectancy (without fatal discontinuities or HIV)
31	Life expectancy (without fatal discontinuities, with HIV)
32	Probability of death (without fatal discontinuities or HIV)
33	Probability of death (without fatal discontinuities, with HIV)
44	Population
45	Fertility

#### 4.7 Model (EpiViz)

The following items are available from the “Model” menu in [EpiViz](#). These are conditions modeled as part of the nonfatal health outcomes component of GBD. The official GBD cause, risk, or impairment to which each condition corresponds is provided on the right.

Model ID	Model Name	Cause, Risk, or Impairment ID	Cause, Risk, or Impairment Name
10832	Drug-sensitive HIV/AIDS - Tuberculosis	948	HIV/AIDS - Drug-susceptible Tuberculosis
10833	Multidrug-resistant HIV/AIDS - Tuberculosis without extensive drug resistance	949	HIV/AIDS - Multidrug-resistant Tuberculosis without extensive drug resistance
10834	Extensively drug-resistant HIV/AIDS - Tuberculosis	950	HIV/AIDS - Extensively drug-resistant Tuberculosis
1177	Early HIV	300	HIV/AIDS resulting in other diseases
1180	AIDS without antiretroviral treatment	300	HIV/AIDS resulting in other diseases
1178	Symptomatic HIV	300	HIV/AIDS resulting in other diseases
1179	AIDS with antiretroviral treatment	300	HIV/AIDS resulting in other diseases
1628	Adult tertiary syphilis	394	Syphilis
3948	Early syphilis infection	394	Syphilis
1629	Chlamydial infection	395	Chlamydial infection
2520	Pelvic inflammatory diseases due to chlamydial infection proportion	395	Chlamydial infection
2931	Pelvic inflammatory diseases due to chlamydial infection	395	Chlamydial infection
2521	Pelvic inflammatory diseases due to gonococcal infection proportion	396	Gonococcal infection
2932	Pelvic inflammatory diseases due to gonococcal infection	396	Gonococcal infection
1635	Gonococcal infection	396	Gonococcal infection
1641	Trichomoniasis infection	397	Trichomoniasis
1642	Genital herpes	398	Genital herpes
2522	Pelvic inflammatory diseases due to other sexually transmitted diseases proportion	399	Other sexually transmitted infections
2933	Pelvic inflammatory diseases due to other sexually transmitted diseases	399	Other sexually transmitted infections

Model ID	Model Name	Cause, Risk, or Impairment ID	Cause, Risk, or Impairment Name
9969	Tuberculosis without HIV infection	297	Tuberculosis
10352	Tuberculosis infection	954	Latent tuberculosis infection
10829	Drug-sensitive tuberculosis	934	Drug-susceptible tuberculosis
10830	Multidrug-resistant tuberculosis without extensive drug resistance	946	Multidrug-resistant tuberculosis without extensive drug resistance
10831	Extensively drug-resistant tuberculosis	947	Extensively drug-resistant tuberculosis
1258	Lower respiratory infections	322	Lower respiratory infections
1276	Upper respiratory infections	328	Upper respiratory infections
1282	Chronic otitis media	329	Otitis media
1281	Acute otitis media	329	Otitis media
1181	Diarrheal diseases	302	Diarrheal diseases
10140	Typhoid and paratyphoid fever (global)	958	Typhoid and paratyphoid
20291	iNTS (high burden model)	959	Invasive Non-typhoidal Salmonella (iNTS)
3055	Malaria	345	Malaria
10141	Chagas prevalence (adjusted for elimination)	346	Chagas disease
11645	Visceral leishmaniasis age/sex pattern	348	Visceral leishmaniasis
1458	Visceral leishmaniasis	348	Visceral leishmaniasis
1461	Cutaneous and mucocutaneous leishmaniasis	349	Cutaneous and mucocutaneous leishmaniasis
10921	Sleeping sickness due to Trypanosoma brucei rhodesiense	350	African trypanosomiasis
10919	Sleeping sickness due to Trypanosoma brucei gambiense	350	African trypanosomiasis
10920	Skin disfigurement due to Trypanosoma brucei rhodesiense	350	African trypanosomiasis
10918	Skin disfigurement due to Trypanosoma brucei gambiense	350	African trypanosomiasis
2797	Schistosomiasis	351	Schistosomiasis
1484	Symptomatic cystic echinococcosis	353	Cystic echinococcosis
10519	Prevalence of detectable microfilaria due to lymphatic	354	Lymphatic filariasis

Model ID	Model Name	Cause, Risk, or Impairment ID	Cause, Risk, or Impairment Name
	filariasis, post-MDA correction		
1494	Onchocerciasis	355	Onchocerciasis
1500	Vision impairment due to trachoma unsqueezed	356	Trachoma
1503	Blindness due to trachoma unsqueezed	356	Trachoma
1505	Dengue	357	Dengue
1509	Yellow fever	358	Yellow fever
20265	Prevalence of ascariasis	361	Ascariasis
2999	All cases of ascariasis	361	Ascariasis
20266	Prevalence of trichuriasis	362	Trichuriasis
3001	All cases of trichuriasis	362	Trichuriasis
3000	All cases of hookworm disease	363	Trichuriasis
20009	Prevalence of hookworm	363	Hookworm disease
1525	Clonorchiasis due to food-borne trematodiasis all countries	364	Food-borne trematodiasis
1528	Opisthorchiasis due to food-borne trematodiasis all countries	364	Food-borne trematodiasis
1526	Fascioliasis due to food-borne trematodiasis all countries	364	Food-borne trematodiasis
1529	Paragonimiasis due to food-borne trematodiasis all countries	364	Food-borne trematodiasis
1527	Intestinal fluke infection due to food-borne trematodiasis all countries	364	Food-borne trematodiasis
1664	Disfigurement level 2 due to leprosy	405	Leprosy
1663	Disfigurement level 1 due to leprosy	405	Leprosy
9669	Post-Ebola chronic fatigue syndrome	843	Ebola
9668	Ebola	843	Ebola
10400	All Zika infections	935	Zika virus
11647	Guinea worm pain due to worm emergence (mild)	936	Guinea worm disease
19838	Moderate pain and limited mobility due to guinea worm	936	Guinea worm disease
1296	Meningitis	332	Meningitis
1419	Acute encephalitis	337	Encephalitis

Model ID	Model Name	Cause, Risk, or Impairment ID	Cause, Risk, or Impairment Name
1421	Diphtheria	338	Diphtheria
1424	Whooping cough	339	Whooping cough
1425	Tetanus	340	Tetanus
1428	Moderate to severe impairment due to neonatal tetanus	340	Tetanus
1426	Severe tetanus	340	Tetanus
1427	Mild impairment due to neonatal tetanus	340	Tetanus
1436	Measles	341	Measles
1440	Chickenpox	342	Varicella and herpes zoster
1441	Herpes zoster	342	Varicella and herpes zoster
1439	Varicella	342	Varicella and herpes zoster
1647	Seroprevalence of anti-HAV	401	Acute hepatitis A
18673	Total hepatitis B (acute and chronic)	402	Acute hepatitis B
1651	Seroprevalence of HBsAg	402	Acute hepatitis B
18672	Total hepatitis C (acute and chronic)	403	Acute hepatitis C
1655	Seroprevalence of anti-HCV	403	Acute hepatitis C
1659	Seroprevalence of anti-HEV	404	Acute hepatitis E
3620	Maternal hemorrhage adjusted for live births	367	Maternal hemorrhage
10538	Maternal hemorrhage mortality rate	367	Maternal hemorrhage
3085	Puerperal sepsis	368	Maternal sepsis and other maternal infections
3086	Other maternal infections	368	Maternal sepsis and other maternal infections
1543	Hypertensive disorders of pregnancy	369	Maternal hypertensive disorders
10539	Maternal hypertensive disorders mortality rate	369	Maternal hypertensive disorders
2627	Long term sequelae of eclampsia	369	Maternal hypertensive disorders
1544	Eclampsia	369	Maternal hypertensive disorders
10504	Severe Pre-eclampsia	369	Maternal hypertensive disorders
1546	Long term sequela for severe pre-eclampsia	369	Maternal hypertensive disorders
1550	Obstructed labor, acute event	370	Maternal obstructed labor and uterine rupture
1552	Fistula	370	Maternal obstructed labor and uterine rupture

Model ID	Model Name	Cause, Risk, or Impairment ID	Cause, Risk, or Impairment Name
1555	Maternal abortive outcome	995	Maternal abortion and miscarriage
10484	Ectopic pregnancy incidence ratio	374	Ectopic pregnancy
10545	Other maternal deaths mortality rate	379	Other maternal disorders
8618	Mild impairment due to neonatal preterm birth <28 wks	381	Neonatal preterm birth
8623	Moderate to severe impairment due to neonatal preterm births 32-<37 wks	381	Neonatal preterm birth
8621	Moderate to severe impairment due to neonatal preterm birth <28 wks	381	Neonatal preterm birth
8619	Mild impairment due to neonatal preterm birth 28-<32 wks	381	Neonatal preterm birth
8675	Neonatal preterm birth <37wks	381	Neonatal preterm birth
1557	Prevalence of neonatal preterm birth <28 wks	381	Neonatal preterm birth
8622	Moderate to severe impairment due to neonatal preterm birth 28-<32 wks	381	Neonatal preterm birth
8620	Mild impairment due to neonatal preterm birth 32-<37 wks	381	Neonatal preterm birth
8691	Birth prevalence of low birth weight, <= 2500g	381	Neonatal preterm birth
8653	Moderate to severe impairment due to neonatal encephalopathy due to birth asphyxia and trauma	382	Neonatal encephalopathy due to birth asphyxia and trauma
2525	Prevalence of neonatal encephalopathy due to birth asphyxia and trauma	382	Neonatal encephalopathy due to birth asphyxia and trauma
8652	Mild impairment due to neonatal encephalopathy due to birth asphyxia and trauma	382	Neonatal encephalopathy due to birth asphyxia and trauma
8673	Mild impairment due to neonatal sepsis and other neonatal infections	383	Neonatal sepsis and other neonatal infections

Model ID	Model Name	Cause, Risk, or Impairment ID	Cause, Risk, or Impairment Name
8674	Moderate to severe impairment due to neonatal sepsis and other neonatal infections	383	Neonatal sepsis and other neonatal infections
1594	Prevalence of neonatal sepsis and other neonatal infections	383	Neonatal sepsis and other neonatal infections
3962	Prevalence of moderate to severe impairment due to neonatal hemolytic disease and other neonatal jaundice	384	Hemolytic disease and other neonatal jaundice
19812	Prevalence of total extreme hyperbilirubinemia (due to RH incompatibility, Preterm birth, G6PD, and other")"	384	Hemolytic disease and other neonatal jaundice
10554	proportion of edema among total wasting	387	Protein-energy malnutrition
10553	proportion of edema among severe wasting	387	Protein-energy malnutrition
2929	Intellectual disability due to iodine deficiency	388	Iodine deficiency
1609	Visible goiter due to iodine deficiency (total)	388	Iodine deficiency
1617	Vision loss due to vitamin A deficiency unsqueezed	389	Vitamin A deficiency
1735	Terminal phase of mouth cancer	444	Lip and oral cavity cancer
1733	Controlled phase of mouth cancer	444	Lip and oral cavity cancer
1734	Metastatic phase of mouth cancer	444	Lip and oral cavity cancer
1732	Diagnosis and primary therapy phase of mouth cancer	444	Lip and oral cavity cancer
1738	Metastatic phase of nasopharynx cancer	447	Nasopharynx cancer
1736	Diagnosis and primary therapy phase of nasopharynx cancer	447	Nasopharynx cancer
1739	Terminal phase of nasopharynx cancer	447	Nasopharynx cancer
1737	Controlled phase of nasopharynx cancer	447	Nasopharynx cancer
1742	Metastatic phase of other pharynx cancer	450	Other pharynx cancer

Model ID	Model Name	Cause, Risk, or Impairment ID	Cause, Risk, or Impairment Name
1740	Diagnosis and primary therapy phase of other pharynx cancer	450	Other pharynx cancer
1743	Terminal phase of other pharynx cancer	450	Other pharynx cancer
1741	Controlled phase of other pharynx cancer	450	Other pharynx cancer
1673	Terminal phase of esophageal cancer	411	Esophageal cancer
1671	Controlled phase of esophageal cancer	411	Esophageal cancer
1672	Metastatic phase of esophageal cancer	411	Esophageal cancer
1670	Diagnosis and primary therapy phase of esophageal cancer	411	Esophageal cancer
1674	Diagnosis and primary therapy phase of stomach cancer	414	Stomach cancer
1676	Metastatic phase of stomach cancer	414	Stomach cancer
1675	Controlled phase of stomach cancer	414	Stomach cancer
1677	Terminal phase of stomach cancer	414	Stomach cancer
1727	Diagnosis and primary therapy phase of colon and rectum cancers	441	Colon and rectum cancer
18790	Controlled phase of colon and rectum cancers, without stoma	441	Colon and rectum cancer
1730	Terminal phase of colon and rectum cancers	441	Colon and rectum cancer
1729	Metastatic phase of colon and rectum cancers	441	Colon and rectum cancer
18791	Stoma due to colon and rectum cancers, beyond 10 years	441	Colon and rectum cancer
18789	Controlled phase of colon and rectum cancers, with stoma	441	Colon and rectum cancer
1682	Diagnosis and primary therapy phase of liver cancer due to hepatitis B	418	Liver cancer due to hepatitis B

Model ID	Model Name	Cause, Risk, or Impairment ID	Cause, Risk, or Impairment Name
1685	Terminal phase of liver cancer due to hepatitis B	418	Liver cancer due to hepatitis B
1683	Controlled phase of liver cancer due to hepatitis B	418	Liver cancer due to hepatitis B
1684	Metastatic phase of liver cancer due to hepatitis B	418	Liver cancer due to hepatitis B
1688	Metastatic phase of liver cancer due to hepatitis C	419	Liver cancer due to hepatitis C
1686	Diagnosis and primary therapy phase of liver cancer due to hepatitis C	419	Liver cancer due to hepatitis C
1689	Terminal phase of liver cancer due to hepatitis C	419	Liver cancer due to hepatitis C
1687	Controlled phase of liver cancer due to hepatitis C	419	Liver cancer due to hepatitis C
1693	Terminal phase of liver cancer due to alcohol use	420	Liver cancer due to alcohol use
1691	Controlled phase of liver cancer due to alcohol use	420	Liver cancer due to alcohol use
1692	Metastatic phase of liver cancer due to alcohol use	420	Liver cancer due to alcohol use
1690	Diagnosis and primary therapy phase of liver cancer due to alcohol use	420	Liver cancer due to alcohol use
18766	Metastatic phase of liver cancer due to NASH	996	Liver cancer due to NASH
18764	Diagnosis and primary therapy phase of liver cancer due to NASH	996	Liver cancer due to NASH
18767	Terminal phase of liver cancer due to NASH	996	Liver cancer due to NASH
18765	Controlled phase of liver cancer due to NASH	996	Liver cancer due to NASH
1696	Metastatic phase of liver cancer due to other causes	421	Liver cancer due to other causes
1694	Diagnosis and primary therapy phase of liver cancer due to other causes	421	Liver cancer due to other causes
1697	Terminal phase of liver cancer due to other causes	421	Liver cancer due to other causes
1695	Controlled phase of liver cancer due to other causes	421	Liver cancer due to other causes
1747	Terminal phase of gallbladder and biliary tract cancer	453	Gallbladder and biliary tract cancer

Model ID	Model Name	Cause, Risk, or Impairment ID	Cause, Risk, or Impairment Name
1745	Controlled phase of gallbladder and biliary tract cancer	453	Gallbladder and biliary tract cancer
1746	Metastatic phase of gallbladder and biliary tract cancer	453	Gallbladder and biliary tract cancer
1744	Diagnosis and primary therapy phase of gallbladder and biliary tract cancer	453	Gallbladder and biliary tract cancer
1750	Metastatic phase of pancreatic cancer	456	Pancreatic cancer
1748	Diagnosis and primary therapy phase of pancreatic cancer	456	Pancreatic cancer
1751	Terminal phase of pancreatic cancer	456	Pancreatic cancer
1749	Controlled phase of pancreatic cancer	456	Pancreatic cancer
18786	Controlled phase of larynx cancer, with laryngectomy	423	Larynx cancer
1700	Metastatic phase of larynx cancer	423	Larynx cancer
18787	Controlled phase of larynx cancer, without laryngectomy	423	Larynx cancer
1701	Terminal phase of larynx cancer	423	Larynx cancer
1698	Diagnosis and primary therapy phase of larynx cancer	423	Larynx cancer
18788	Laryngectomy due to larynx cancer, beyond 10 years	423	Larynx cancer
1705	Metastatic phase of lung, bronchus, and trachea cancer	426	Tracheal, bronchus, and lung cancer
1703	Diagnosis and primary therapy phase of lung, bronchus, and trachea cancer	426	Tracheal, bronchus, and lung cancer
1706	Terminal phase of lung, bronchus, and trachea cancer	426	Tracheal, bronchus, and lung cancer
1704	Controlled phase of lung, bronchus, and trachea cancer	426	Tracheal, bronchus, and lung cancer
1754	Metastatic phase of malignant skin melanoma	459	Malignant skin melanoma

Model ID	Model Name	Cause, Risk, or Impairment ID	Cause, Risk, or Impairment Name
1752	Diagnosis and primary therapy phase of malignant skin melanoma	459	Malignant skin melanoma
1755	Terminal phase of malignant skin melanoma	459	Malignant skin melanoma
1753	Controlled phase of malignant skin melanoma	459	Malignant skin melanoma
2513	Cutaneous squamous cell carcinoma	849	Non-melanoma skin cancer (squamous-cell carcinoma)
1760	Basal cell carcinoma	850	Non-melanoma skin cancer (basal-cell carcinoma)
18778	Controlled phase of breast cancer, with mastectomy	429	Breast cancer
1709	Metastatic phase of breast cancer	429	Breast cancer
1707	Diagnosis and primary therapy phase of breast cancer	429	Breast cancer
18779	Controlled phase of breast cancer, without mastectomy	429	Breast cancer
1710	Terminal phase of breast cancer	429	Breast cancer
1708	Controlled phase of breast cancer	429	Breast cancer
18780	Mastectomy due to breast cancer, beyond 10 years	429	Breast cancer
1713	Controlled phase of cervical cancer	432	Cervical cancer
1714	Metastatic phase of cervical cancer	432	Cervical cancer
1712	Diagnosis and primary therapy phase of cervical cancer	432	Cervical cancer
1715	Terminal phase of cervical cancer	432	Cervical cancer
1716	Diagnosis and primary therapy phase of uterine cancer	435	Uterine cancer
1719	Terminal phase of uterine cancer	435	Uterine cancer
1717	Controlled phase of uterine cancer	435	Uterine cancer
1718	Metastatic phase of uterine cancer	435	Uterine cancer

Model ID	Model Name	Cause, Risk, or Impairment ID	Cause, Risk, or Impairment Name
1761	Diagnosis and primary therapy phase of ovarian cancer	465	Ovarian cancer
1763	Metastatic phase of ovarian cancer	465	Ovarian cancer
1762	Controlled phase of ovarian cancer	465	Ovarian cancer
1764	Terminal phase of ovarian cancer	465	Ovarian cancer
18781	Controlled phase of prostate cancer, with impotence	438	Prostate cancer
1722	Metastatic phase of prostate cancer	438	Prostate cancer
18784	Impotence due to prostate cancer, beyond 10 years	438	Prostate cancer
18782	Controlled phase of prostate cancer, with incontinence	438	Prostate cancer
1723	Terminal phase of prostate cancer	438	Prostate cancer
18785	Incontinence due to prostate cancer, beyond 10 years	438	Prostate cancer
1720	Diagnosis and primary therapy phase of prostate cancer	438	Prostate cancer
18783	Controlled phase of prostate cancer, without impotence or incontinence	438	Prostate cancer
1768	Terminal phase of testicular cancer	468	Testicular cancer
1766	Controlled phase of testicular cancer	468	Testicular cancer
1767	Metastatic phase of testicular cancer	468	Testicular cancer
1765	Diagnosis and primary therapy phase of testicular cancer	468	Testicular cancer
1771	Metastatic phase of kidney cancer	471	Kidney cancer
1769	Diagnosis and primary therapy phase of kidney cancer	471	Kidney cancer
1772	Terminal phase of kidney cancer	471	Kidney cancer
1770	Controlled phase of kidney cancer	471	Kidney cancer

Model ID	Model Name	Cause, Risk, or Impairment ID	Cause, Risk, or Impairment Name
18792	Controlled phase of bladder cancer, with incontinence	474	Bladder cancer
1775	Metastatic phase of bladder cancer	474	Bladder cancer
18793	Controlled phase of bladder cancer, without incontinence	474	Bladder cancer
1776	Terminal phase of bladder cancer	474	Bladder cancer
1773	Diagnosis and primary therapy phase of bladder cancer	474	Bladder cancer
18794	Incontinence due to bladder cancer, beyond 10 years	474	Bladder cancer
1781	Terminal phase of brain and nervous system cancers	477	Brain and nervous system cancer
1779	Controlled phase of brain and nervous system cancers	477	Brain and nervous system cancer
1778	Diagnosis and primary therapy phase of brain and nervous system cancers	477	Brain and nervous system cancer
1780	Metastatic phase of brain and nervous system cancers	477	Brain and nervous system cancer
1783	Controlled phase of thyroid cancer	480	Thyroid cancer
1784	Metastatic phase of thyroid cancer	480	Thyroid cancer
1782	Diagnosis and primary therapy phase of thyroid cancer	480	Thyroid cancer
1785	Terminal phase of thyroid cancer	480	Thyroid cancer
1789	Terminal phase of mesothelioma	483	Mesothelioma
1787	Controlled phase of mesothelioma	483	Mesothelioma
1788	Metastatic phase of mesothelioma	483	Mesothelioma
1786	Diagnosis and primary therapy phase of mesothelioma	483	Mesothelioma
1790	Diagnosis and primary therapy phase of Hodgkin disease	484	Hodgkin lymphoma
1792	Metastatic phase of Hodgkin disease	484	Hodgkin lymphoma

Model ID	Model Name	Cause, Risk, or Impairment ID	Cause, Risk, or Impairment Name
1791	Controlled phase of Hodgkin disease	484	Hodgkin lymphoma
1793	Terminal phase of Hodgkin disease	484	Hodgkin lymphoma
1795	Controlled phase of non-Hodgkin lymphoma	485	Non-Hodgkin lymphoma
1796	Metastatic phase of non-Hodgkin lymphoma	485	Non-Hodgkin lymphoma
1794	Diagnosis and primary therapy phase of non-Hodgkin lymphoma	485	Non-Hodgkin lymphoma
1797	Terminal phase of non-Hodgkin lymphoma	485	Non-Hodgkin lymphoma
1798	Diagnosis and primary therapy phase of multiple myeloma	486	Multiple myeloma
1801	Terminal phase of multiple myeloma	486	Multiple myeloma
1799	Controlled phase of multiple myeloma	486	Multiple myeloma
1800	Metastatic phase of multiple myeloma	486	Multiple myeloma
1804	Metastatic phase of leukemia	487	Leukemia
1802	Diagnosis and primary therapy phase of leukemia	487	Leukemia
1805	Terminal phase of leukemia	487	Leukemia
1803	Controlled phase of leukemia	487	Leukemia
9476	Diagnosis and primary therapy phase of acute lymphoid leukemia	845	Acute lymphoid leukemia
9479	Terminal phase of acute lymphoid leukemia	845	Acute lymphoid leukemia
9477	Controlled phase of acute lymphoid leukemia	845	Acute lymphoid leukemia
9478	Metastatic phase of acute lymphoid leukemia	845	Acute lymphoid leukemia
9483	Metastatic phase of chronic lymphoid leukemia	846	Chronic lymphoid leukemia
9481	Diagnosis and primary therapy phase of chronic lymphoid leukemia	846	Chronic lymphoid leukemia
9484	Terminal phase of chronic lymphoid leukemia	846	Chronic lymphoid leukemia
9482	Controlled phase of chronic lymphoid leukemia	846	Chronic lymphoid leukemia

Model ID	Model Name	Cause, Risk, or Impairment ID	Cause, Risk, or Impairment Name
9487	Controlled phase of acute myeloid leukemia	847	Acute myeloid leukemia
9488	Metastatic phase of acute myeloid leukemia	847	Acute myeloid leukemia
9486	Diagnosis and primary therapy phase of acute myeloid leukemia	847	Acute myeloid leukemia
9489	Terminal phase of acute myeloid leukemia	847	Acute myeloid leukemia
9491	Diagnosis and primary therapy phase of chronic myeloid leukemia	848	Chronic myeloid leukemia
9494	Terminal phase of chronic myeloid leukemia	848	Chronic myeloid leukemia
9492	Controlled phase of chronic myeloid leukemia	848	Chronic myeloid leukemia
9493	Metastatic phase of chronic myeloid leukemia	848	Chronic myeloid leukemia
10739	Metastatic phase of other leukemia	943	Other leukemia
10737	Diagnosis and primary therapy phase of other leukemia	943	Other leukemia
18821	Terminal phase of other leukemia	943	Other leukemia
10738	Controlled phase of other leukemia	943	Other leukemia
19827	Terminal phase of other malignant neoplasms	489	Other malignant neoplasms
19825	Controlled phase of other malignant neoplasms	489	Other malignant neoplasms
19826	Metastatic phase of other malignant neoplasms	489	Other malignant neoplasms
19824	Diagnosis and primary therapy phase of other malignant neoplasms	489	Other malignant neoplasms
18759	Myelodysplastic, myeloproliferative, and other hematopoietic neoplasms	964	Myelodysplastic, myeloproliferative, and other hematopoietic neoplasms
18760	Benign and in situ intestinal neoplasms	965	Benign and in situ intestinal neoplasms
18761	Benign and in situ cervical and uterine neoplasms	966	Benign and in situ cervical and uterine neoplasms
18762	Other benign and in situ neoplasms	967	Other benign and in situ neoplasms

Model ID	Model Name	Cause, Risk, or Impairment ID	Cause, Risk, or Impairment Name
1810	Rheumatic heart disease including heart failure	492	Rheumatic heart disease
3233	Asymptomatic ischemic heart disease following myocardial infarction	493	Ischemic heart disease
1814	Myocardial infarction due to ischemic heart disease	493	Ischemic heart disease
1817	Angina due to ischemic heart disease	493	Ischemic heart disease
9310	First ever acute ischemic stroke with CSMR	495	Ischemic stroke
10837	Chronic ischemic stroke with CSMR	495	Ischemic stroke
9311	First ever acute intracerebral hemorrhage with CSMR	496	Intracerebral hemorrhage
10836	Chronic intracerebral hemorrhage with CSMR	496	Intracerebral hemorrhage
18731	First ever acute subarachnoid hemorrhage with CSMR	497	Subarachnoid hemorrhage
18733	Chronic subarachnoid hemorrhage with CSMR	497	Subarachnoid hemorrhage
16601	Calcific aortic valve disease	968	Non-rheumatic calcific aortic valve disease
16602	Degenerative mitral valve disease	969	Non-rheumatic degenerative mitral valve disease
1855	Acute myocarditis	942	Myocarditis
9366	Atrial Fibrillation with EMR	500	Atrial fibrillation and flutter
2532	Peripheral arterial disease	502	Peripheral artery disease
1862	Endocarditis	503	Endocarditis
2908	Other CVD disability not including heart failure	507	Other cardiovascular and circulatory diseases
3063	GOLD II chronic obstructive pulmonary disease proportion	509	Chronic obstructive pulmonary disease
1872	Chronic obstructive pulmonary disease	509	Chronic obstructive pulmonary disease
3064	GOLD III+IV chronic obstructive pulmonary disease proportion	509	Chronic obstructive pulmonary disease
3062	GOLD I chronic obstructive pulmonary disease proportion	509	Chronic obstructive pulmonary disease
1879	Silicosis	511	Silicosis
1886	Asbestosis	512	Asbestosis

Model ID	Model Name	Cause, Risk, or Impairment ID	Cause, Risk, or Impairment Name
1893	Coal workers pneumoconiosis all countries	513	Coal workers pneumoconiosis
1900	Other pneumoconiosis	514	Other pneumoconiosis
1907	Asthma cases	515	Asthma
1911	Interstitial lung disease and pulmonary sarcoidosis	516	Interstitial lung disease and pulmonary sarcoidosis
11653	Total cirrhosis and other chronic liver diseases	521	Cirrhosis and other chronic liver diseases
1919	Cirrhosis and other chronic liver diseases, decompensated	521	Cirrhosis and other chronic liver diseases
18662	Non-alcoholic fatty liver disease (NAFLD) - exclusions unadjusted	971	Cirrhosis due to NASH
9759	Total peptic ulcer disease, symptomatic and asymptomatic	527	Peptic ulcer disease
9761	Total gastritis and duodenitis, symptomatic and asymptomatic	528	Gastritis and duodenitis
18664	Gastroesophageal reflux disease	536	Gastroesophageal reflux disease
1932	Appendicitis	529	Appendicitis
1933	Paralytic ileus and intestinal obstruction	530	Paralytic ileus and intestinal obstruction
9794	Total inguinal, femoral, and abdominal hernia	531	Inguinal, femoral, and abdominal hernia
1934	Inguinal, femoral and abdominal hernia, symptomatic	531	Inguinal, femoral, and abdominal hernia
9542	Inguinal, femoral and abdominal hernia, asymptomatic	531	Inguinal, femoral, and abdominal hernia
3103	Ulcerative colitis	532	Inflammatory bowel disease
3104	Crohn's disease	532	Inflammatory bowel disease
1939	Vascular intestinal disorders	533	Vascular intestinal disorders
9535	Asymptomatic gallbladder and biliary disease	534	Gallbladder and biliary diseases
9760	Total gallbladder and biliary diseases, symptomatic and asymptomatic	534	Gallbladder and biliary diseases
1940	Gallbladder and biliary diseases, symptomatic episodes	534	Gallbladder and biliary diseases
15812	Pancreatitis, acute episodes	535	Pancreatitis

Model ID	Model Name	Cause, Risk, or Impairment ID	Cause, Risk, or Impairment Name
1941	Pancreatitis, chronic	535	Pancreatitis
20166	Dementia with codem csmr	543	Alzheimer's disease and other dementias
20167	Parkinson's disease with codem csmr	544	Parkinson's disease
1955	Multiple sclerosis	546	Multiple sclerosis
3940	Motor neuron disease	554	Motor neuron disease
1959	Migraine cases	547	Migraine
3074	Medication overuse headache cases	547	Migraine
1960	Tension-type headache cases	548	Tension-type headache
1964	Schizophrenia	559	Schizophrenia
1981	Major depressive disorder	568	Major depressive disorder
1985	Dysthymia cases	569	Dysthymia
1986	Bipolar disorder	570	Bipolar disorder
1989	Anxiety disorders cases	571	Anxiety disorders
1993	Anorexia nervosa	573	Anorexia nervosa
1994	Bulimia nervosa	574	Bulimia nervosa
18668	Autism spectrum disorders	575	Autism spectrum disorders
1997	Attention-deficit/hyperactivity disorder cases	578	Attention-deficit/hyperactivity disorder
1998	Conduct disorder cases	579	Conduct disorder
2003	Profound idiopathic intellectual disability	582	Idiopathic developmental intellectual disability
2001	Moderate idiopathic intellectual disability	582	Idiopathic developmental intellectual disability
1999	Borderline idiopathic intellectual disability	582	Idiopathic developmental intellectual disability
2002	Severe idiopathic intellectual disability	582	Idiopathic developmental intellectual disability
2000	Mild idiopathic intellectual disability	582	Idiopathic developmental intellectual disability
10719	Other mental disorders residual group	585	Other mental disorders
1967	Alcohol dependence cases	560	Alcohol use disorders
1971	Fetal alcohol syndrome cases	560	Alcohol use disorders
1976	Opioid use disorders cases	562	Opioid use disorders
1977	Cocaine use disorders cases	563	Cocaine use disorders
1978	Amphetamine use disorders cases	564	Amphetamine use disorders
1979	Cannabis use disorders cases	565	Cannabis use disorders
10720	Other drug use disorders residual group	566	Other drug use disorders

Model ID	Model Name	Cause, Risk, or Impairment ID	Cause, Risk, or Impairment Name
2007	Diabetic foot proportion	587	Diabetes mellitus
2790	Vision impairment due to diabetes mellitus	587	Diabetes mellitus
2008	Diabetic neuropathy proportion	587	Diabetes mellitus
2005	Diabetes mellitus	587	Diabetes mellitus
2793	Blindness due to diabetes mellitus unsqueezed	587	Diabetes mellitus
2010	Amputation due to diabetes mellitus proportion	587	Diabetes mellitus
18655	Diabetes mellitus - type 1	975	Diabetes mellitus type 1
18656	Diabetes mellitus - type 2	976	Diabetes mellitus type 2
2022	Stage V chronic kidney disease untreated	589	Chronic kidney disease
2020	End-stage renal disease after transplant	589	Chronic kidney disease
2018	Stage III chronic kidney disease	589	Chronic kidney disease
10509	Albuminuria	589	Chronic kidney disease
2021	End-stage renal disease on dialysis	589	Chronic kidney disease
2019	Stage IV chronic kidney disease	589	Chronic kidney disease
10731	Stage III-V chronic kidney disease	589	Chronic kidney disease
18723	Chronic kidney disease YLD registry proportion due to type 1 diabetes	997	Chronic kidney disease due to diabetes mellitus type 1
18724	Chronic kidney disease YLD registry proportion due to type 2 diabetes	998	Chronic kidney disease due to diabetes mellitus type 2
9973	Chronic kidney disease YLD registry proportion due to hypertension	591	Chronic kidney disease due to hypertension
9972	Chronic kidney disease YLD registry proportion due to glomerulonephritis	592	Chronic kidney disease due to glomerulonephritis
9974	Chronic kidney disease YLD registry proportion due to other and unspecified causes	593	Chronic kidney disease due to other and unspecified causes
2017	Acute glomerulonephritis	588	Acute glomerulonephritis
2247	Atopic dermatitis	977	Atopic dermatitis
2574	Contact dermatitis	978	Contact dermatitis
2578	Seborrhoeic dermatitis	979	Seborrhoeic dermatitis
2251	Psoriasis	655	Psoriasis

Model ID	Model Name	Cause, Risk, or Impairment ID	Cause, Risk, or Impairment Name
2255	Cellulitis	656	Cellulitis
2261	Abscess and other bacterial skin diseases	657	Pyoderma
2258	Impetigo	657	Pyoderma
2262	Scabies	658	Scabies
2265	Tinea capitis	659	Fungal skin diseases
2616	Other fungal skin diseases	659	Fungal skin diseases
2269	Viral warts	660	Viral skin diseases
2274	Molluscum contagiosum	660	Viral skin diseases
2275	Acne vulgaris	661	Acne vulgaris
2276	Alopecia areata	662	Alopecia areata
2280	Pruritus	663	Pruritus
2283	Urticaria	664	Urticaria
2286	Decubitus ulcer	665	Decubitus ulcer
2290	Other skin and subcutaneous diseases	668	Other skin and subcutaneous diseases
2291	Vision impairment due to glaucoma unsqueezed	670	Glaucoma
2294	Blindness due to glaucoma unsqueezed	670	Glaucoma
2296	Vision impairment due to cataract unsqueezed	671	Cataract
2299	Blindness due to cataract unsqueezed	671	Cataract
2301	Vision impairment due to macular degeneration unsqueezed	672	Age-related macular degeneration
2304	Blindness due to macular degeneration unsqueezed	672	Age-related macular degeneration
10845	Blindness due to uncorrected refractive error unsqueezed	999	Refraction disorders
10843	Moderate vision impairment due to uncorrected refractive error unsqueezed	999	Refraction disorders
10844	Severe vision impairment due to uncorrected refractive error unsqueezed	999	Refraction disorders
2424	Near vision loss	1000	Near vision loss
2325	Vision impairment due to other vision loss unsqueezed	675	Other vision loss
2328	Blindness due to other vision loss unsqueezed	675	Other vision loss
2311	Age-related and other hearing loss unsqueezed	674	Age-related and other hearing loss

Model ID	Model Name	Cause, Risk, or Impairment ID	Cause, Risk, or Impairment Name
9549	Acute other sense organ diseases	679	Other sense organ diseases
9550	Chronic other sense organ diseases	679	Other sense organ diseases
2137	Rheumatoid arthritis	627	Rheumatoid arthritis
2145	Osteoarthritis of the knee	628	Osteoarthritis
2141	Osteoarthritis of the hip	628	Osteoarthritis
2149	Low back pain	630	Low back pain
2154	Neck pain	631	Neck pain
2159	Gout cases	632	Gout
3136	Other musculoskeletal disorders	639	Other musculoskeletal disorders
10417	Anencephaly	642	Neural tube defects
10421	Spina bifida	642	Neural tube defects
10415	Total neural tube congenital anomalies	642	Neural tube defects
10419	Encephalocele	642	Neural tube defects
10443	Ventricular septal defect and atrial septal defect	643	Congenital heart anomalies
10439	Single ventricle and single ventricle pathway heart defects	643	Congenital heart anomalies
10445	Severe congenital heart defects excluding single ventricle and single ventricle pathway	643	Congenital heart anomalies
10441	Critical malformations of great vessels, congenital valvular heart disease and patent ductus arteriosus	643	Congenital heart anomalies
3245	Orofacial clefts	644	Orofacial clefts
3246	Down syndrome	645	Down syndrome
3247	Turner syndrome	646	Turner syndrome
3248	Klinefelter syndrome	647	Klinefelter syndrome
10449	Edward Syndrome and Patau Syndrome	648	Other chromosomal abnormalities
18654	Total chromosomal congenital anomalies	648	Other chromosomal abnormalities
10411	Polydactyly and syndactyly	649	Congenital musculoskeletal and limb anomalies
10409	Limb reduction deficits	649	Congenital musculoskeletal and limb anomalies
10423	Congenital urinary anomalies	650	Urogenital congenital anomalies

Model ID	Model Name	Cause, Risk, or Impairment ID	Cause, Risk, or Impairment Name
10425	Congenital genital anomalies	650	Urogenital congenital anomalies
10431	Congenital malformations of the abdominal wall	651	Digestive congenital anomalies
10427	Total digestive congenital anomalies	651	Digestive congenital anomalies
10433	Congenital atresia and/or stenosis of the digestive tract	651	Digestive congenital anomalies
10429	Congenital diaphragmatic hernia	651	Digestive congenital anomalies
2055	Urinary tract infections	595	Urinary tract infections
2058	Acute urolithiasis	596	Urolithiasis
2060	Benign prostatic hyperplasia	597	Benign prostatic hyperplasia
2062	Secondary male infertility	598	Male infertility
2061	Primary male infertility	598	Male infertility
2064	Uterine fibroids	604	Uterine fibroids
2068	Polycystic ovarian syndrome	605	Polycystic ovarian syndrome
2073	Endometriosis cases	607	Endometriosis
2078	Genital prolapse	608	Genital prolapse
3133	Premenstrual syndrome all cases	609	Premenstrual syndrome
18741	Menstrual disorders	612	Other gynecological diseases
2913	Other gynecological cases that are not menstrual disorders	612	Other gynecological diseases
2085	Beta-thalassemia major parent	614	Thalassemias
2087	Hemoglobin E/beta-thalassemia parent	614	Thalassemias
2089	Hemoglobin H disease parent	614	Thalassemias
2100	Hemoglobin SC disease parent	615	Sickle cell disorders
2103	Mild sickle cell/beta-thalassemia parent	615	Sickle cell disorders
2097	Homozygous sickle cell and severe sickle cell/beta-thalassemia parent	615	Sickle cell disorders
2112	G6PD deficiency	616	G6PD deficiency
2125	Endocrine, metabolic, blood, and immune disorders	619	Endocrine, metabolic, blood, and immune disorders
2334	Deciduous caries	681	Caries of deciduous teeth
2335	Permanent caries prior to edentulism correction	682	Caries of permanent teeth

Model ID	Model Name	Cause, Risk, or Impairment ID	Cause, Risk, or Impairment Name
2336	Chronic periodontal disease prior to edentulism correction	683	Periodontal diseases
2337	Edentulism	684	Edentulism and severe tooth loss
3254	Other oral disorders	685	Other oral disorders
2339	Road injuries	689	Road injuries
2585	Pedestrian road injuries by road vehicle	690	Pedestrian road injuries
2586	Cyclist road injuries	691	Cyclist road injuries
2587	Motorcyclist road injuries	692	Motorcyclist road injuries
2588	Motor vehicle road injuries	693	Motor vehicle road injuries
2589	Other road injuries	694	Other road injuries
2340	Other transport injuries	695	Other transport injuries
2341	Falls	697	Falls
2342	Drowning	698	Drowning
2343	Fire, heat, and hot substances	699	Fire, heat, and hot substances
2344	Poisonings	700	Poisonings
18658	Poisoning by carbon monoxide	701	Poisoning by carbon monoxide
18659	Poisoning by other means	703	Poisoning by other means
2345	Exposure to mechanical forces	704	Exposure to mechanical forces
2590	Unintentional firearm injuries	705	Unintentional firearm injuries
2592	Other exposure to mechanical forces	707	Other exposure to mechanical forces
2346	Adverse effects of medical treatment	708	Adverse effects of medical treatment
2347	Animal contact	709	Animal contact
2593	Venomous animal contact	710	Venomous animal contact
2594	Non-venomous animal contact	711	Non-venomous animal contact
2348	Pulmonary aspiration and foreign body in airway	713	Pulmonary aspiration and foreign body in airway
2595	Foreign body in eyes	714	Foreign body in eyes
2596	Foreign body in other body part	715	Foreign body in other body part
2349	Other unintentional injuries	716	Other unintentional injuries
2350	Self-harm	718	Self-harm
10726	Self-harm by firearm	721	Self-harm by firearm
10727	Self-harm by other specified means	723	Self-harm by other specified means
2351	Interpersonal violence	724	Interpersonal violence

Model ID	Model Name	Cause, Risk, or Impairment ID	Cause, Risk, or Impairment Name
2597	Assault by firearm	725	Physical violence by firearm
2598	Assault by sharp object	726	Physical violence by sharp object
10470	Sexual violence (yearly recall)	941	Sexual violence
2599	Assault by other means	727	Physical violence by other means
8873	Unsafe water exposure, Improved & filtered	83	Unsafe water source
15794	Unsafe water exposure, Piped & filtered	83	Unsafe water source
8872	Unsafe water exposure, Improved & chlorinated	83	Unsafe water source
8871	Unsafe water exposure, Improved & untreated	83	Unsafe water source
8870	Unsafe water exposure, Unimproved & filtered	83	Unsafe water source
8869	Unsafe water exposure, Unimproved & chlorinated	83	Unsafe water source
9415	Unsafe water exposure, Unimproved & untreated	83	Unsafe water source
8875	Unsafe water exposure, Piped & chlorinated	83	Unsafe water source
8874	Unsafe water exposure, Piped & untreated	83	Unsafe water source
9369	Unsafe sanitation exposure, Unimproved & untreated	84	Unsafe sanitation
8879	Unsafe sanitation exposure, Improved	84	Unsafe sanitation
8944	No access to handwashing facility exposure	238	No access to handwashing facility
2511	Household air pollution from solid fuels	87	Household air pollution from solid fuels
2535	Residential radon (Bq/m3)	90	Residential radon
8953	Lead exposure in blood exposure	242	Lead exposure in blood
8954	Lead exposure in bone exposure	243	Lead exposure in bone
16424	Occupational exposure to asbestos, Any exposure	150	Occupational exposure to asbestos
8917	Occupational exposure to arsenic exposure, Low exposure	151	Occupational exposure to arsenic
8916	Occupational exposure to arsenic exposure, High exposure	151	Occupational exposure to arsenic

Model ID	Model Name	Cause, Risk, or Impairment ID	Cause, Risk, or Impairment Name
8919	Occupational exposure to benzene exposure, Low exposure	152	Occupational exposure to benzene
8918	Occupational exposure to benzene exposure, High exposure	152	Occupational exposure to benzene
8920	Occupational exposure to beryllium exposure, High exposure	153	Occupational exposure to beryllium
8921	Occupational exposure to beryllium exposure, Low exposure	153	Occupational exposure to beryllium
8923	Occupational exposure to cadmium exposure, Low exposure	154	Occupational exposure to cadmium
8922	Occupational exposure to cadmium exposure, High exposure	154	Occupational exposure to cadmium
8925	Occupational exposure to chromium exposure, Low exposure	155	Occupational exposure to chromium
8924	Occupational exposure to chromium exposure, High exposure	155	Occupational exposure to chromium
8927	Occupational exposure to diesel engine exhaust exposure, Low exposure	156	Occupational exposure to diesel engine exhaust
8926	Occupational exposure to diesel engine exhaust exposure, High exposure	156	Occupational exposure to diesel engine exhaust
8931	Occupational exposure to formaldehyde exposure, Low exposure	158	Occupational exposure to formaldehyde
8930	Occupational exposure to formaldehyde exposure, High exposure	158	Occupational exposure to formaldehyde
8933	Occupational exposure to nickel exposure, Low exposure	159	Occupational exposure to nickel
8932	Occupational exposure to nickel exposure, High exposure	159	Occupational exposure to nickel
8935	Occupational exposure to polycyclic aromatic	160	Occupational exposure to polycyclic aromatic hydrocarbons

Model ID	Model Name	Cause, Risk, or Impairment ID	Cause, Risk, or Impairment Name
	hydrocarbons exposure, Low exposure		
8934	Occupational exposure to polycyclic aromatic hydrocarbons exposure, High exposure	160	Occupational exposure to polycyclic aromatic hydrocarbons
8937	Occupational exposure to silica exposure, Low exposure	161	Occupational exposure to silica
8936	Occupational exposure to silica exposure, High exposure	161	Occupational exposure to silica
8938	Occupational exposure to sulfuric acid exposure, High exposure	162	Occupational exposure to sulfuric acid
8939	Occupational exposure to sulfuric acid exposure, Low exposure	162	Occupational exposure to sulfuric acid
8943	Occupational exposure to trichloroethylene exposure, Low exposure	237	Occupational exposure to trichloroethylene
8942	Occupational exposure to trichloroethylene exposure, High exposure	237	Occupational exposure to trichloroethylene
8890	Occupational asthmagens exposure, Services	128	Occupational asthmagens
8889	Occupational asthmagens exposure, Manufact	128	Occupational asthmagens
8888	Occupational asthmagens exposure, Transport	128	Occupational asthmagens
8887	Occupational asthmagens exposure, Mining	128	Occupational asthmagens
8886	Occupational asthmagens exposure, Agriculture	128	Occupational asthmagens
8885	Occupational asthmagens exposure, Sales	128	Occupational asthmagens
8884	Occupational asthmagens exposure, Technical	128	Occupational asthmagens
8883	Occupational asthmagens exposure, Admin	128	Occupational asthmagens
8893	Occupational particulate matter, gases, and fumes exposure, Low	129	Occupational particulate matter, gases, and fumes
8892	Occupational particulate matter, gases, and fumes exposure, High	129	Occupational particulate matter, gases, and fumes

Model ID	Model Name	Cause, Risk, or Impairment ID	Cause, Risk, or Impairment Name
8895	Occupational noise exposure, Low exposure (85-90dB)	130	Occupational noise
8894	Occupational noise exposure, High exposure (>90dB)	130	Occupational noise
8903	Occupational ergonomic factors exposure, Production and related workers, transport equipment operators and labourers	132	Occupational ergonomic factors
8902	Occupational ergonomic factors exposure, Agriculture, animal husbandry and forestry workers, fishermen and hunters	132	Occupational ergonomic factors
8901	Occupational ergonomic factors exposure, Service workers	132	Occupational ergonomic factors
8900	Occupational ergonomic factors exposure, Sales workers	132	Occupational ergonomic factors
8899	Occupational ergonomic factors exposure, Clerical and related workers	132	Occupational ergonomic factors
8898	Occupational ergonomic factors exposure, Administrative and managerial workers	132	Occupational ergonomic factors
8897	Occupational ergonomic factors exposure, Professional, technical and related workers	132	Occupational ergonomic factors
9598	Non-exclusive breastfeeding exposure, none	136	Non-exclusive breastfeeding
8905	Non-exclusive breastfeeding exposure, predominant	136	Non-exclusive breastfeeding
8904	Non-exclusive breastfeeding exposure, partial	136	Non-exclusive breastfeeding
8907	Discontinued breastfeeding exposure	137	Discontinued breastfeeding
2542	Child underweight exposure, -2 to -1 sd	94	Child underweight
2541	Child underweight exposure, -3 to -2 sd	94	Child underweight
2540	Child underweight exposure, <-3 sd	94	Child underweight

Model ID	Model Name	Cause, Risk, or Impairment ID	Cause, Risk, or Impairment Name
8947	Child wasting exposure, -2 to -1 sd	240	Child wasting
8946	Child wasting exposure, -3 to -2 sd	240	Child wasting
8945	Child wasting exposure, <-3 sd	240	Child wasting
8951	Child stunting exposure, -2 to -1 sd	241	Child stunting
8950	Child stunting exposure, -3 to -2 sd	241	Child stunting
8949	Child stunting exposure, <-3 sd	241	Child stunting
8882	Iron deficiency exposure	95	Iron deficiency
2640	Vitamin A supplementation coverage	96	Vitamin A deficiency
2510	Vitamin A deficiency	96	Vitamin A deficiency
2544	Zinc deficiency	97	Zinc deficiency
19766	Prevalence of Former Any Smokers	99	Smoking
19763	Prevalence of Current Any Smokers	99	Smoking
10620	Smokeless tobacco	332	Chewing tobacco
11522	Secondhand smoke exposure	100	Secondhand smoke
3365	Proportion of lifetime abstainers	102	Alcohol use
3364	Proportion of current drinkers	102	Alcohol use
3360	Alcohol Consumption (g/day)	102	Alcohol use
2787	Intravenous drug use	138	Drug use dependence and blood borne viruses
2430	Diet low in fruits (g/day)	111	Diet low in fruits
2442	Diet low in vegetables (g/day)	112	Diet low in vegetables
2432	Diet low in legumes (g/day)	333	Diet low in legumes
2431	Diet low in whole grains (g/day)	113	Diet low in whole grains
2434	Diet low in nuts and seeds (g/day)	114	Diet low in nuts and seeds
2433	Diet low in milk (g/day)	115	Diet low in milk
2437	Diet high in red meat (g/day)	116	Diet high in red meat
2435	Diet high in processed meat (g/day)	117	Diet high in processed meat
2440	Diet high in sugar-sweetened beverages (g/day)	118	Diet high in sugar-sweetened beverages
2428	Diet low in fiber (g/day)	119	Diet low in fiber
2427	Diet low in calcium (g/day)	147	Diet low in calcium

Model ID	Model Name	Cause, Risk, or Impairment ID	Cause, Risk, or Impairment Name
2429	Diet low in seafood omega-3 fatty acids (g/day)	121	Diet low in seafood omega-3 fatty acids
2439	Diet high in saturated fatty acids (% energy/day)	122	Diet low in polyunsaturated fatty acids
2436	Diet low in polyunsaturated fatty acids (% energy/day)	122	Diet low in polyunsaturated fatty acids
2441	Diet high in trans fatty acids (% energy/day)	123	Diet high in trans fatty acids
2438	Diet high in sodium (g/day)	124	Diet high in sodium
2452	Intimate partner violence	167	Intimate partner violence (exposure approach)
2453	Fraction of homicide against females due to IPV	168	Intimate partner violence (direct PAF approach)
3054	Female childhood sexual abuse	244	Childhood sexual abuse against females
3053	Male childhood sexual abuse	245	Childhood sexual abuse against males
18740	Bullying victimization exposure	363	Bullying victimization
2639	Proportion HIV due to other	170	Unsafe sex
2638	Proportion HIV due to sex	170	Unsafe sex
2637	Proportion HIV due to intravenous drug use	170	Unsafe sex
10729	Physical activity (METs)	125	Low physical activity
8909	High fasting plasma glucose (continuous) exposure	141	High fasting plasma glucose (continuous)
2005	Diabetes mellitus	142	High fasting plasma glucose (categorical)
18822	Low-density lipoprotein (mmol/L)	367	High LDL cholesterol
2547	Systolic blood pressure level	107	High systolic blood pressure
9364	Prevalence of Obesity (BMI $\geq 30$ )	108	High body-mass index
9363	Prevalence of Overweight (BMI $\geq 25$ )	108	High body-mass index
10345	Childhood proportion obese	371	High body-mass index in children
10344	Childhood proportion overweight	371	High body-mass index in children
2443	Low bone mineral density mean	109	Low bone mineral density
10509	Albuminuria	341	Impaired kidney function
10507	Anemia Impairment	192	Anemia
10491	Severe Anemia Impairment	192	Anemia

Model ID	Model Name	Cause, Risk, or Impairment ID	Cause, Risk, or Impairment Name
10490	Moderate Anemia Impairment	192	Anemia
10489	Mild Anemia Impairment	192	Anemia
10488	Standard Deviation of Hemoglobin (g/L, altitude adjusted)	192	Anemia
10487	Mean Hemoglobin (g/L, altitude adjusted)	192	Anemia
2403	Epilepsy impairment envelope	193	Epilepsy
2404	Guillain-Barre syndrome impairment envelope	194	Guillain-Barré syndrome
2788	Hearing loss impairment at 0-19 dB	195	Hearing loss
2411	Hearing aids (proportion of total hearing loss)	195	Hearing loss
2633	Hearing loss impairment at 80-94 dB	195	Hearing loss
2410	Hearing loss impairment at 95+ dB	195	Hearing loss
2632	Hearing loss impairment at 65-79 dB	195	Hearing loss
2406	Hearing loss impairment at 35+ dB	195	Hearing loss
2631	Hearing loss impairment at 50-64 dB	195	Hearing loss
2630	Hearing loss impairment at 35-49 dB	195	Hearing loss
2629	Hearing loss impairment at 20-34 dB	195	Hearing loss
2412	Heart failure impairment envelope	196	Heart failure
2422	Secondary infertility impairment envelope	198	Infertility
2421	Primary infertility impairment envelope	198	Infertility
2826	Proportion female secondary infertility	198	Infertility
3342	Secondary female infertility impairment envelope	198	Infertility
2825	Proportion male secondary infertility	198	Infertility
3341	Secondary male infertility impairment envelope	198	Infertility

Model ID	Model Name	Cause, Risk, or Impairment ID	Cause, Risk, or Impairment Name
2824	Proportion female primary infertility	198	Infertility
3340	Primary female infertility impairment envelope	198	Infertility
2823	Proportion male primary infertility	198	Infertility
3339	Primary male infertility impairment envelope	198	Infertility
2795	Secondary infertility exposure	198	Infertility
2794	Primary infertility exposure	198	Infertility
9427	Profound intellectual disability impairment envelope	197	Developmental intellectual disability
9426	Severe intellectual disability impairment envelope	197	Developmental intellectual disability
9425	Moderate intellectual disability impairment envelope	197	Developmental intellectual disability
9424	Mild intellectual disability impairment envelope	197	Developmental intellectual disability
9423	Borderline intellectual disability impairment envelope	197	Developmental intellectual disability
20419	Age-restricted pelvic inflammatory disease	199	Pelvic inflammatory disease
2567	Severe vision impairment envelope	200	Blindness and vision impairment
2566	Moderate vision impairment envelope	200	Blindness and vision impairment
2426	Blindness impairment envelope	200	Blindness and vision impairment

#### 4.8 Risk

Risk ID	Risk Name
169	<b>All risk factors</b>
202	<b>Environmental/occupational risks</b>
82	<b>Unsafe water, sanitation, and handwashing</b>
83	Unsafe water source
84	Unsafe sanitation
238	No access to handwashing facility
85	<b>Air pollution</b>
86	Ambient particulate matter pollution

Risk ID	Risk Name
87	Household air pollution from solid fuels
88	Ambient ozone pollution
89	<b>Other environmental risks</b>
90	Residential radon
91	Lead exposure
126	<b>Occupational risks</b>
127	<b>Occupational carcinogens</b>
150	Occupational exposure to asbestos
151	Occupational exposure to arsenic
152	Occupational exposure to benzene
153	Occupational exposure to beryllium
154	Occupational exposure to cadmium
155	Occupational exposure to chromium
156	Occupational exposure to diesel engine exhaust
157	Occupational exposure to secondhand smoke
159	Occupational exposure to nickel
160	Occupational exposure to polycyclic aromatic hydrocarbons
161	Occupational exposure to silica
162	Occupational exposure to sulfuric acid
237	Occupational exposure to trichloroethylene
128	Occupational asthmagens
129	Occupational particulate matter, gases, and fumes
130	Occupational noise
131	Occupational injuries
132	Occupational ergonomic factors
203	<b>Behavioral risks</b>
92	<b>Child and maternal malnutrition</b>
93	<b>Suboptimal breastfeeding</b>
136	Non-exclusive breastfeeding
137	Discontinued breastfeeding
239	<b>Child growth failure</b>
94	Child underweight
240	Child wasting
241	Child stunting
339	<b>Low birth weight and short gestation</b>
334	Short gestation for birth weight
335	Low birth weight for gestation
95	Iron deficiency
96	Vitamin A deficiency
97	Zinc deficiency
98	<b>Tobacco</b>
99	Smoking
332	Chewing tobacco
100	Secondhand smoke
102	Alcohol use

Risk ID	Risk Name
103	Drug use
110	<b>Dietary risks</b>
111	Diet low in fruits
112	Diet low in vegetables
333	Diet low in legumes
113	Diet low in whole grains
114	Diet low in nuts and seeds
115	Diet low in milk
116	Diet high in red meat
117	Diet high in processed meat
118	Diet high in sugar-sweetened beverages
119	Diet low in fiber
147	Diet low in calcium
121	Diet low in seafood omega-3 fatty acids
122	Diet low in polyunsaturated fatty acids
123	Diet high in trans fatty acids
124	Diet high in sodium
135	Intimate partner violence
381	<b>Childhood maltreatment</b>
134	Childhood sexual abuse
363	Bullying victimization
170	Unsafe sex
125	Low physical activity
104	<b>Metabolic risks</b>
105	High fasting plasma glucose
367	High LDL cholesterol
107	High systolic blood pressure
108	High body-mass index
109	Low bone mineral density
341	Impaired kidney function

#### 4.9 Sequela Aggregate

The Sequela aggregate context in the GBD Results Tool allows users to select aggregate sequelae (Level 5 sequela in the GBD 2017 Cause and Sequela Hierarchy). Only the causes with multiple sequelae aggregates are available using this context.

Sequela ID	Sequela Name
6485	HIV/AIDS not on antiretroviral treatment without Tuberculosis
6488	HIV/AIDS on antiretroviral treatment without Tuberculosis
6308	Diarrheal disease episode
668	Guillain-Barré syndrome due to diarrheal diseases
6911	Typhoid fever episode
6908	Typhoid fever complications
6734	Paratyphoid fever episode

Sequela ID	Sequela Name
13	Intestinal perforation due to paratyphoid
671	Guillain-Barré syndrome due to lower respiratory infections
6569	Lower respiratory infection episode
17	Guillain-Barré syndrome due to upper respiratory infections
6926	Upper respiratory infection episode
6263	Chronic otitis media
18	Acute otitis media
6998	Pneumococcal meningitis complications
19	Acute pneumococcal meningitis
42	Acute H influenzae type B meningitis
6989	H Influenza type B meningitis complications
65	Acute meningococcal meningitis
6992	Meningococcal meningitis complications
111	Acute viral meningitis
6995	Other bacterial meningitis complications
88	Other acute bacterial meningitis
112	Acute encephalitis
6986	Encephalitis complications
6653	Neonatal tetanus complications
116	Severe tetanus
119	Chickenpox
120	Herpes zoster
6578	Malaria complications
6581	Malaria episode
22685	Malaria parasitemia
935	Asymptomatic Chagas disease
124	Acute Chagas disease
6866	Symptomatic chronic Chagas infection
6902	Trypanosomiasis Rhodesiense
6899	Trypanosomiasis Gambiense
136	Mild schistosomiasis
6779	Schistosomiasis complications
6161	Anemia due to schistosomiasis
6572	Lymphatic filariasis complications
149	Prevalence of detectable microfilaria due to lymphatic filariasis
956	Asymptomatic onchocerciasis
6803	Skin disease due to onchocerciasis
6965	Vision loss due to onchocerciasis
6299	Dengue episode
159	Post-dengue chronic fatigue syndrome
1112	Asymptomatic yellow fever
6977	Yellow fever episode
957	Asymptomatic ascariasis
6176	Ascariasis complications
6896	Trichuriasis complications

Sequela ID	Sequela Name
958	Asymptomatic trichuriasis
6149	Anemia due to hookworm disease
974	Asymptomatic hookworm disease
6494	Hookworm disease complications
6371	Food-borne tremodiases complications
6182	Asymptomatic food-borne tremodiases
6158	Anemia due to other neglected tropical diseases
176	Acute infection due to other neglected tropical diseases
6590	Maternal hemorrhage complications
6593	Maternal hemorrhage episode
675	Infertility due to puerperal sepsis
6608	Maternal sepsis and other maternal infection episode
6599	Maternal hypertensive disorder episode
6596	Maternal hypertensive disorder complications
188	Obstructed labor, acute event
6602	Maternal obstructed labor complications
6914	Uncomplicated preterm birth
6773	Retinopathy of prematurity
6767	Preterm birth complications
6650	Neonatal sepsis and other neonatal infection episode
6647	Neonatal sepsis and other neonatal infection complications
200	Visible goiter without symptoms
22703	Visible goiter with complications
6971	Vitamin A deficiency complications
6974	Vitamin A deficiency with anemia
2189	Asymptomatic vitamin A deficiency
6326	Early syphilis
6872	Tertiary syphilis
6239	Chlamydia episode
6242	Chlamydial infection complications
6398	Gonococcal infection complications
6401	Gonorrhoea episode
808	Other sexually transmitted diseases residual
22847	Other sexually transmitted diseases
6155	Anemia due to other infectious diseases
5159	Other infectious diseases
243	Guillain-Barré syndrome due to other infectious diseases
247	Terminal phase of esophageal cancer
245	Controlled phase of esophageal cancer
246	Metastatic phase of esophageal cancer
244	Diagnosis and primary therapy phase of esophageal cancer
250	Metastatic phase of stomach cancer
248	Diagnosis and primary therapy phase of stomach cancer
251	Terminal phase of stomach cancer
249	Controlled phase of stomach cancer

Sequela ID	Sequela Name
252	Diagnosis and primary therapy phase of liver cancer due to hepatitis B
254	Metastatic phase of liver cancer due to hepatitis B
255	Terminal phase of liver cancer due to hepatitis B
253	Controlled phase of liver cancer due to hepatitis B
256	Diagnosis and primary therapy phase of liver cancer due to hepatitis C
258	Metastatic phase of liver cancer due to hepatitis C
257	Controlled phase of liver cancer due to hepatitis C
259	Terminal phase of liver cancer due to hepatitis C
261	Controlled phase of liver cancer due to alcohol use
260	Diagnosis and primary therapy phase of liver cancer due to alcohol use
262	Metastatic phase of liver cancer due to alcohol use
263	Terminal phase of liver cancer due to alcohol use
266	Metastatic phase of liver cancer due to other causes
264	Diagnosis and primary therapy phase of liver cancer due to other causes
267	Terminal phase of liver cancer due to other causes
265	Controlled phase of liver cancer due to other causes
270	Metastatic phase of larynx cancer
271	Terminal phase of larynx cancer
5516	Laryngectomy from larynx cancer, beyond 10 years
268	Diagnosis and primary therapy phase of larynx cancer
269	Controlled phase of larynx cancer
275	Metastatic phase of lung, bronchus, and trachea cancer
274	Controlled phase of lung, bronchus, and trachea cancer
273	Diagnosis and primary therapy phase of lung, bronchus, and trachea cancer
276	Terminal phase of lung, bronchus, and trachea cancer
279	Metastatic phase of breast cancer
277	Diagnosis and primary therapy phase of breast cancer
280	Terminal phase of breast cancer
278	Controlled phase of breast cancer
5492	Mastectomy from breast cancer, beyond 10 years
285	Terminal phase of cervical cancer
282	Diagnosis and primary therapy phase of cervical cancer
284	Metastatic phase of cervical cancer
283	Controlled phase of cervical cancer
287	Controlled phase of uterine cancer
289	Terminal phase of uterine cancer
288	Metastatic phase of uterine cancer
286	Diagnosis and primary therapy phase of uterine cancer
293	Terminal phase of prostate cancer
290	Diagnosis and primary therapy phase of prostate cancer
292	Metastatic phase of prostate cancer
6503	Impotence and Incontinence after 10-year survival from prostate cancer
291	Controlled phase of prostate cancer
299	Terminal phase of colon and rectum cancers
298	Metastatic phase of colon and rectum cancers

Sequela ID	Sequela Name
296	Diagnosis and primary therapy phase of colon and rectum cancers
5525	Stoma from colon and rectum cancers, beyond 10 years
297	Controlled phase of colon and rectum cancers
304	Terminal phase of mouth cancer
302	Controlled phase of mouth cancer
303	Metastatic phase of mouth cancer
301	Diagnosis and primary therapy phase of mouth cancer
305	Diagnosis and primary therapy phase of nasopharynx cancer
308	Terminal phase of nasopharynx cancer
306	Controlled phase of nasopharynx cancer
307	Metastatic phase of nasopharynx cancer
310	Controlled phase of other pharynx cancer
311	Metastatic phase of other pharynx cancer
312	Terminal phase of other pharynx cancer
309	Diagnosis and primary therapy phase of other pharynx cancer
314	Controlled phase of gallbladder and biliary tract cancer
313	Diagnosis and primary therapy phase of gallbladder and biliary tract cancer
315	Metastatic phase of gallbladder and biliary tract cancer
316	Terminal phase of gallbladder and biliary tract cancer
320	Terminal phase of pancreatic cancer
319	Metastatic phase of pancreatic cancer
318	Controlled phase of pancreatic cancer
317	Diagnosis and primary therapy phase of pancreatic cancer
322	Controlled phase of malignant skin melanoma
321	Diagnosis and primary therapy phase of malignant skin melanoma
323	Metastatic phase of malignant skin melanoma
324	Terminal phase of malignant skin melanoma
332	Terminal phase of ovarian cancer
331	Metastatic phase of ovarian cancer
329	Diagnosis and primary therapy phase of ovarian cancer
330	Controlled phase of ovarian cancer
334	Controlled phase of testicular cancer
336	Terminal phase of testicular cancer
333	Diagnosis and primary therapy phase of testicular cancer
335	Metastatic phase of testicular cancer
340	Terminal phase of kidney cancer
337	Diagnosis and primary therapy phase of kidney cancer
339	Metastatic phase of kidney cancer
338	Controlled phase of kidney cancer
344	Terminal phase of bladder cancer
5534	Incontinence from bladder cancer, beyond 10 years
342	Controlled phase of bladder cancer
341	Diagnosis and primary therapy phase of bladder cancer
343	Metastatic phase of bladder cancer
348	Metastatic phase of brain and nervous system cancers

Sequela ID	Sequela Name
349	Terminal phase of brain and nervous system cancers
346	Diagnosis and primary therapy phase of brain and nervous system cancers
347	Controlled phase of brain and nervous system cancers
352	Metastatic phase of thyroid cancer
351	Controlled phase of thyroid cancer
353	Terminal phase of thyroid cancer
350	Diagnosis and primary therapy phase of thyroid cancer
356	Metastatic phase of mesothelioma
357	Terminal phase of mesothelioma
354	Diagnosis and primary therapy phase of mesothelioma
355	Controlled phase of mesothelioma
360	Metastatic phase of Hodgkin disease
361	Terminal phase of Hodgkin disease
359	Controlled phase of Hodgkin disease
358	Diagnosis and primary therapy phase of Hodgkin disease
362	Diagnosis and primary therapy phase of non-Hodgkin lymphoma
364	Metastatic phase of non-Hodgkin lymphoma
365	Terminal phase of non-Hodgkin lymphoma
363	Controlled phase of non-Hodgkin lymphoma
366	Diagnosis and primary therapy phase of multiple myeloma
368	Metastatic phase of multiple myeloma
367	Controlled phase of multiple myeloma
369	Terminal phase of multiple myeloma
5873	Terminal phase of other malignant neoplasms
5864	Diagnosis and primary therapy phase of other malignant neoplasms
5867	Controlled phase of other malignant neoplasms
5870	Metastatic phase of other malignant neoplasms
1116	Rheumatic heart disease, without heart failure
6461	Heart failure due to rheumatic heart disease
6443	Heart failure due to ischemic heart disease
1040	Asymptomatic ischemic heart disease following myocardial infarction
6635	Myocardial infarction due to ischemic heart disease
6167	Angina due to ischemic heart disease
6116	Acute ischemic stroke
6248	Chronic ischemic stroke
6113	Acute intracerebral hemorrhage
6245	Chronic intracerebral hemorrhage
6266	Chronic subarachnoid hemorrhage
6131	Acute subarachnoid hemorrhage
913	Symptomatic atrial fibrillation and flutter
809	Asymptomatic atrial fibrillation and flutter
1041	Symptomatic claudication due to peripheral arterial disease
964	Asymptomatic peripheral arterial disease
6428	Heart failure due to endocarditis
6098	Acute endocarditis

Sequela ID	Sequela Name
6677	Other cardiovascular and circulatory disease episodes
6452	Heart failure due to other cardiovascular diseases
6260	Chronic obstructive pulmonary disease without heart failure
6257	Chronic obstructive pulmonary disease with heart failure
6464	Heart failure due to silicosis
6797	Silicosis without heart failure
6173	Asbestosis without heart failure
6416	Heart failure due to asbestosis
6275	Coal workers pneumoconiosis without heart failure
6422	Heart failure due to Coal workers pneumoconiosis
6716	Other pneumoconiosis without heart failure
6458	Heart failure due to other pneumoconiosis
830	Asymptomatic asthma
6863	Symptomatic asthma
6521	Interstitial lung disease and pulmonary sarcoidosis without heart failure
6437	Heart failure due to interstitial lung disease and pulmonary sarcoidosis
835	Cirrhosis and other chronic liver diseases due to hepatitis B, decompensated
902	Chronic hepatitis B without cirrhosis
5135	Cirrhosis and other chronic liver diseases due to hepatitis B, compensated
903	Chronic hepatitis C without cirrhosis
5138	Cirrhosis and other chronic liver diseases due to hepatitis C, compensated
836	Cirrhosis and other chronic liver diseases due to hepatitis C, decompensated
5141	Cirrhosis and other chronic liver diseases due to alcohol, compensated
834	Cirrhosis and other chronic liver diseases due to alcohol, decompensated
5144	Cirrhosis and other chronic liver diseases due to other cause, compensated
837	Cirrhosis and other chronic liver diseases due to other cause, decompensated
22709	Chronic peptic ulcer disease
22706	Acute peptic ulcer disease
22712	Acute gastritis and duodenitis
22715	Chronic gastritis and duodenitis
955	Crohn's disease
954	Ulcerative colitis
5621	Acute pancreatitis
22724	Chronic pancreatitis
6623	Migraine
6614	Medication overuse headache due to migraine
6869	Tension-type headache
6617	Medication overuse headache due to tension-type headache
465	Guillain-Barré syndrome due to other neurological disorders
464	Other neurological disorders
6137	Alcohol dependence
6368	Fetal alcohol syndrome
6350	End-stage chronic kidney disease due to hypertension
6851	Stage V chronic kidney disease due to hypertension
5546	Albuminuria with preserved GFR due to hypertension

Sequela ID	Sequela Name
6836	Stage IV chronic kidney disease due to hypertension
6821	Stage III chronic kidney disease due to hypertension
5549	Albuminuria with preserved GFR due to glomerulonephritis
6833	Stage IV chronic kidney disease due to glomerulonephritis
6347	End-stage chronic kidney disease due to glomerulonephritis
6848	Stage V chronic kidney disease due to glomerulonephritis
6818	Stage III chronic kidney disease due to glomerulonephritis
6353	End-stage chronic kidney disease due to other causes
6824	Stage III chronic kidney disease due to other causes
5552	Albuminuria with preserved GFR due to other and unspecified causes
6854	Stage V chronic kidney disease due to other causes
6839	Stage IV chronic kidney disease due to other causes
6686	Other gynecological diseases
6689	Other gynecological diseases with anemia
6431	Heart failure due to endocrine, metabolic, blood, and immune disorders
6146	Anemia due to endocrine, metabolic, blood, and immune disorders
6356	Endocrine, metabolic, blood, and immune disorders
6671	Osteoarthritis of the hip
6674	Osteoarthritis of the knee
6566	Low back pain without leg pain
6563	Low back pain with leg pain
1904	Severe motor and cognitive impairment due to anencephaly
6806	Spina bifida due to neural tube defects
6338	Encephalocele due to neural tube defects
6788	Severe congenital heart anomalies excluding single ventricle heart defects
6290	Critical malformations of great vessels, congenital valvular heart disease and patent ductus arteriosus
6800	Single ventricle and single ventricle pathway congenital heart anomalies
6950	Ventricular septal defect and atrial septal defect
6683	Other congenital heart anomalies
22802	Congenital limb deficiency
22805	Other congenital musculoskeletal anomalies
22799	Polydactyly and syndactyly
22811	Congenital diaphragmatic hernia
22817	Congenital malformations of the abdominal wall after treatment
22820	Other congenital malformations of the digestive tract
22814	Congenital atresia and/or stenosis of the digestive tract
5162	Other congenital birth defects
6410	Hearing loss due to other congenital anomalies
595	Abscess and other bacterial skin diseases
594	Impetigo
597	Tinea capitis
672	Other fungal skin diseases
7007	Molluscum contagiosum
7004	Viral warts

Sequela ID	Sequela Name
2660	Chronic other sense organ diseases
6125	Acute other sense organ diseases
1185	Post-Ebola chronic fatigue syndrome
1184	Ebola cases
1194	Metastatic phase of acute lymphoid leukemia
1190	Controlled phase of acute lymphoid leukemia
1198	Terminal phase of acute lymphoid leukemia
1186	Diagnosis and primary therapy phase of acute lymphoid leukemia
1200	Terminal phase of chronic lymphoid leukemia
1188	Diagnosis and primary therapy phase of chronic lymphoid leukemia
1192	Controlled phase of chronic lymphoid leukemia
1196	Metastatic phase of chronic lymphoid leukemia
1195	Metastatic phase of acute myeloid leukemia
1187	Diagnosis and primary therapy phase of acute myeloid leukemia
1191	Controlled phase of acute myeloid leukemia
1199	Terminal phase of acute myeloid leukemia
1189	Diagnosis and primary therapy phase of chronic myeloid leukemia
1197	Metastatic phase of chronic myeloid leukemia
1193	Controlled phase of chronic myeloid leukemia
1201	Terminal phase of chronic myeloid leukemia
6980	Zika virus complications
6983	Zika virus episode
409	Acute myocarditis
6446	Heart failure due to myocarditis
1487	Terminal phase of other leukemia
1490	Controlled phase of other leukemia
1484	Diagnosis and primary therapy phase of other leukemia
1481	Metastatic phase of other leukemia
6662	Non-rheumatic calcific aortic valve disease
6419	Heart failure due to calcific aortic valve disease
6665	Non-rheumatic degenerative mitral valve disease
6425	Heart failure due to degenerative mitral valve disease
5324	Moderate heart failure due to other non-rheumatic valve disease
5765	Controlled, medically managed heart failure due to other non-rheumatic valve disease
5327	Severe heart failure due to other non-rheumatic valve disease
5321	Mild heart failure due to other non-rheumatic valve disease
6269	Cirrhosis and other chronic liver diseases due to NASH
5477	Non-alcoholic fatty liver disease (NAFLD) / Non-alcoholic steatohepatitis (NASH)
22748	Vision loss due to diabetes mellitus type 1 retinopathy
5441	Uncomplicated diabetes mellitus type 1
22853	Diabetic neuropathy due to diabetes mellitus type 1
22856	Diabetic neuropathy due to diabetes mellitus type 2
22751	Vision loss due to diabetes mellitus type 2 retinopathy
5465	Uncomplicated diabetes mellitus type 2

Sequela ID	Sequela Name
5423	Metastatic phase of liver cancer due to NASH
5417	Diagnosis and primary therapy phase of liver cancer due to NASH
5420	Controlled phase of liver cancer due to NASH
5426	Terminal phase of liver cancer due to NASH
6812	Stage III chronic kidney disease due to diabetes mellitus type 1
5540	Albuminuria with preserved GFR due to type 1 diabetes mellitus
6842	Stage V chronic kidney disease due to diabetes mellitus type 1
6827	Stage IV chronic kidney disease due to diabetes mellitus type 1
6341	End-stage chronic kidney disease due to diabetes mellitus type 1
5543	Albuminuria with preserved GFR due to type 2 diabetes mellitus
6344	End-stage chronic kidney disease due to diabetes mellitus type 2
6815	Stage III chronic kidney disease due to diabetes mellitus type 2
6845	Stage V chronic kidney disease due to diabetes mellitus type 2
6830	Stage IV chronic kidney disease due to diabetes mellitus type 2

#### 4.10 Sex

Sex ID	Sex Name
1	Male
2	Female
3	Both sexes