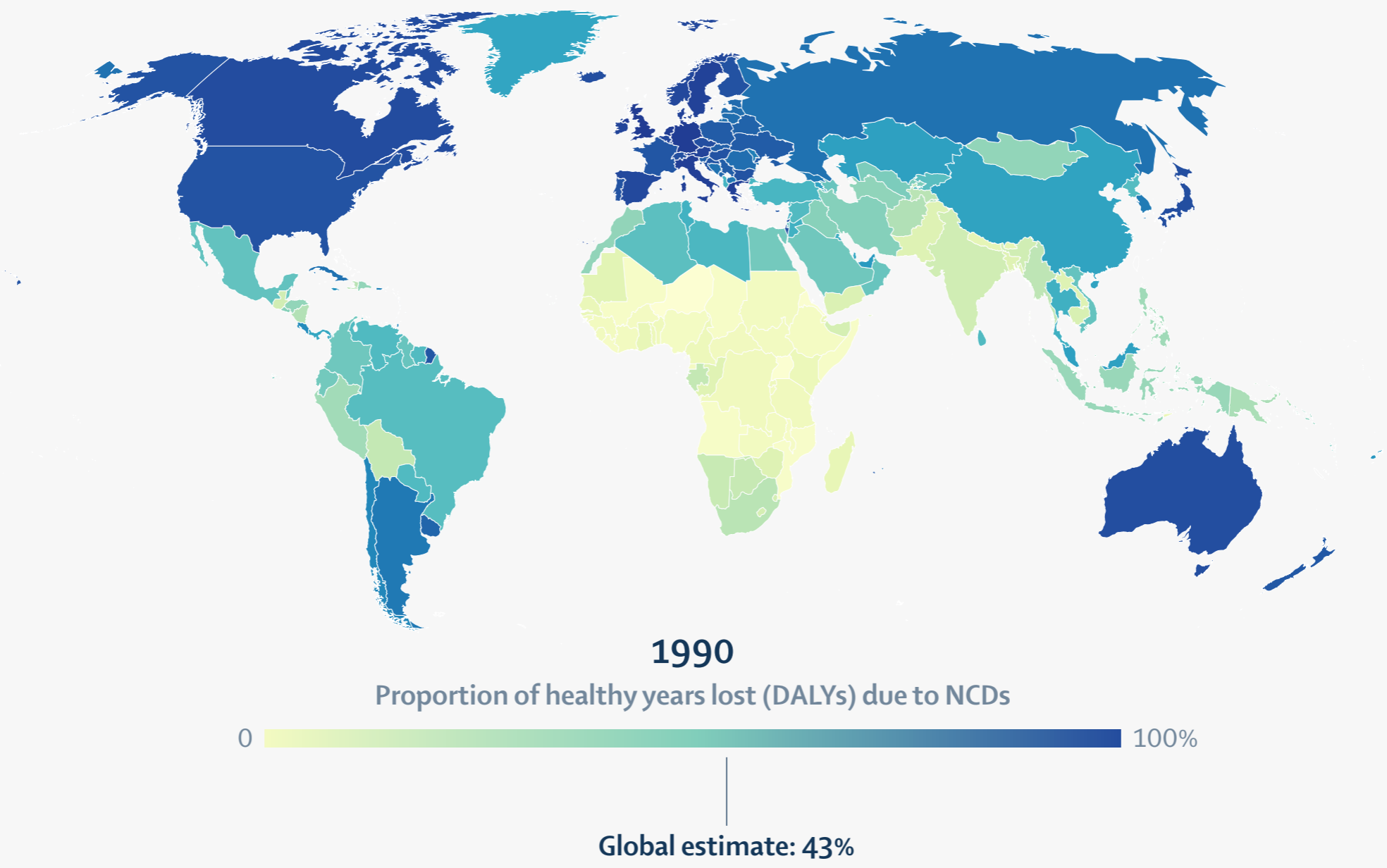


Health systems must adapt to rapid shift in disease burden

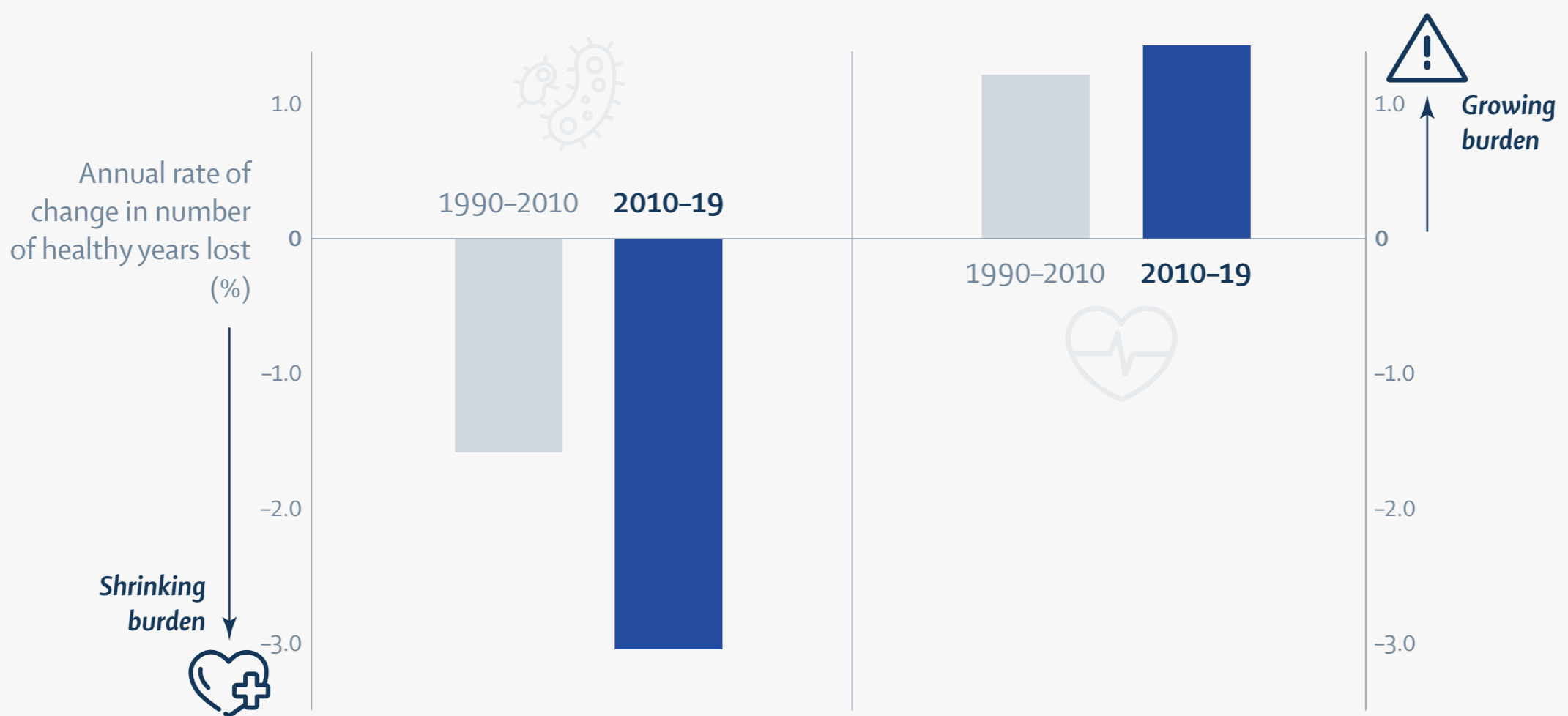
In 1990, non-communicable diseases (NCDs) contributed less than half of overall global health loss.



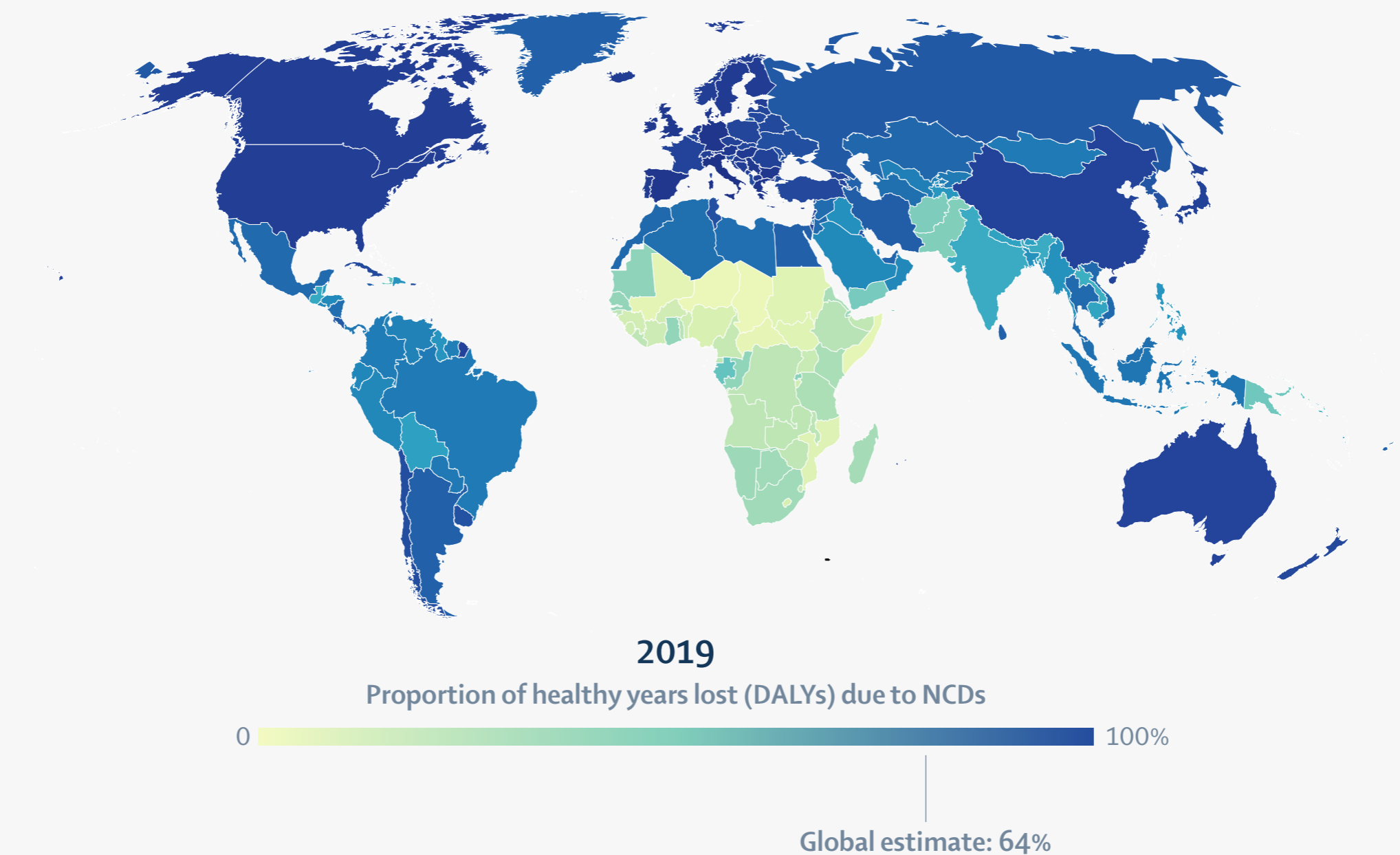
But since 1990, the health loss has shifted towards a growing burden from NCDs and away from communicable, maternal, neonatal, and nutritional (CMNN) diseases.

The rate of *decrease* in CMNN burden has accelerated...

...while the rate of *increase* in NCD burden has accelerated.



Many health systems are not prepared for the rapid transition from disease burden dominated by CMNN causes to NCDs. They must adapt.



Source: Global Burden of Disease 2019 • Data available from <http://ghdx.healthdata.org/gbd-results-tool>.