

GBD PROFILE: SWITZERLAND

GLOBAL BURDEN OF DISEASES, INJURIES, AND RISK FACTORS STUDY 2010

The Global Burden of Disease Study 2010 (GBD 2010) is a collaborative project of nearly 500 researchers in 50 countries led by the Institute for Health Metrics and Evaluation (IHME) at the University of Washington. It is the largest systematic scientific effort in history to quantify levels and trends of health loss due to diseases, injuries, and risk factors. GBD serves as a global public good to inform evidence-based policymaking and health systems design.

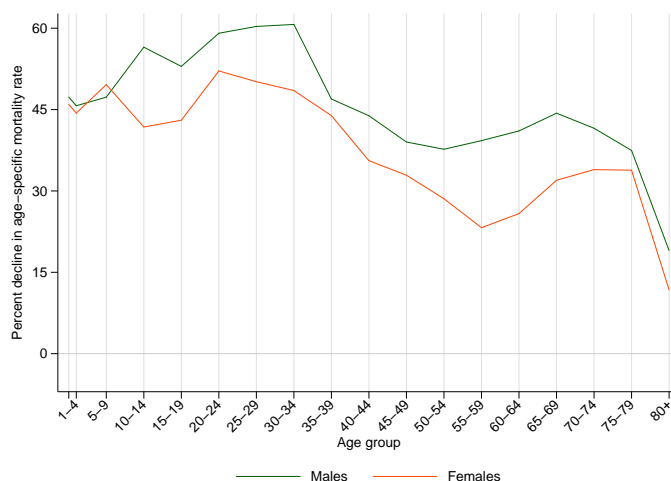
PROFILE OVERVIEW

- In terms of the number of years of life lost (YLLs) due to premature death in Switzerland, ischemic heart disease, trachea, bronchus, and lung cancers, and cerebrovascular disease were the highest ranking causes in 2010.
- Of the 25 most important causes of burden, as measured by disability-adjusted life years (DALYs), road injury showed the largest decrease, falling by 39% from 1990 to 2010.
- The leading risk factor in Switzerland is dietary risks.

ALL-CAUSE MORTALITY RATE

- This chart shows the decline in mortality rate at every age range. The higher points on the chart indicate that declines in mortality rates were faster in those age groups between 1990 and 2010.
- The greatest reductions in all-cause mortality rate were experienced by males aged 30-34 years (61%). Females aged 80+ years saw the smallest decrease in mortality rate (12%).

Percent decline in age-specific mortality rate by sex from 1990-2010 in Switzerland



CAUSES OF PREMATURE DEATH

Years of life lost (YLLs) quantify premature mortality by weighting younger deaths more than older deaths.

Ranks for top 25 causes of YLLs 1990-2010, Switzerland

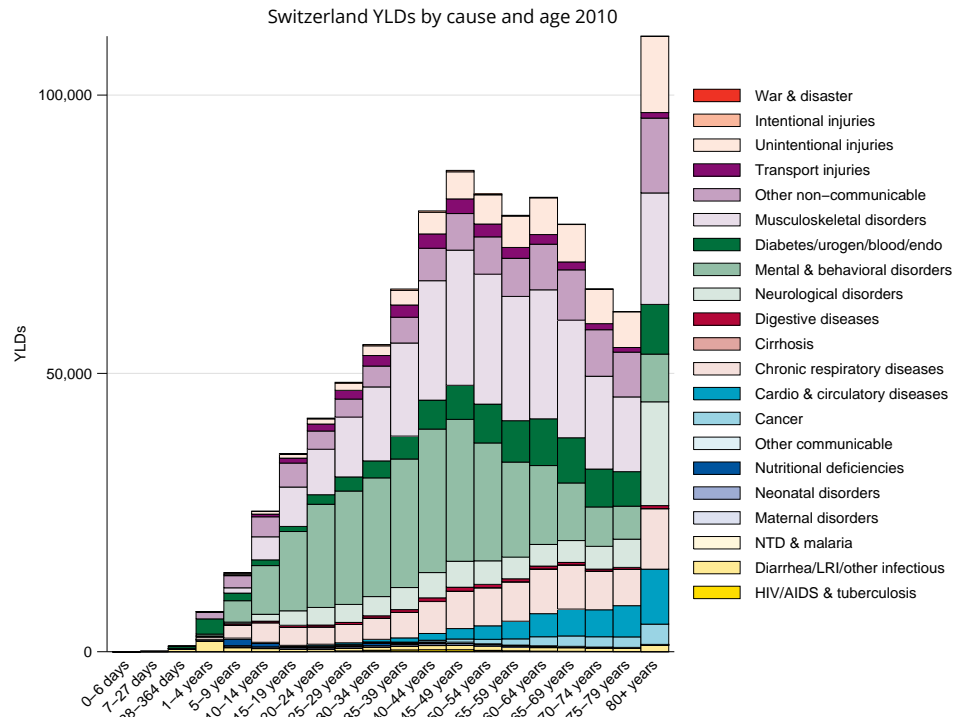
| # YLLs in thousands (% of total) | Rank and disorder 1990 | Rank and disorder 2010 | # YLLs in thousands (% of total) | % change |
|-------------------------------------|---------------------------------|---------------------------------|-------------------------------------|----------|
| 196 (18.8%) | 1 Ischemic heart disease | 1 Ischemic heart disease | 144 (16.9%) | -27 |
| 84 (8.0%) | 2 Stroke | 2 Lung cancer | 58 (6.8%) | 0 |
| 67 (6.4%) | 3 Self-harm | 3 Stroke | 55 (6.4%) | -36 |
| 59 (5.6%) | 4 Lung cancer | 4 Self-harm | 47 (5.5%) | -29 |
| 49 (4.7%) | 5 Road injury | 5 Colorectal cancer | 30 (3.6%) | -2 |
| 34 (3.3%) | 6 Breast cancer | 6 Breast cancer | 28 (3.3%) | -19 |
| 31 (2.9%) | 7 Colorectal cancer | 7 COPD | 25 (2.9%) | -4 |
| 26 (2.5%) | 8 COPD | 8 Falls | 21 (2.5%) | -12 |
| 25 (2.4%) | 9 Congenital anomalies | 9 Road injury | 20 (2.4%) | -59 |
| 24 (2.3%) | 10 Lower respiratory infections | 10 Diabetes | 19 (2.3%) | 1 |
| 24 (2.3%) | 11 Falls | 11 Lower respiratory infections | 19 (2.2%) | -22 |
| 19 (1.8%) | 12 Diabetes | 12 Pancreatic cancer | 18 (2.1%) | 22 |
| 19 (1.9%) | 13 Cirrhosis | 13 Alzheimers disease | 17 (2.0%) | 57 |
| 19 (1.8%) | 14 Other cardio & circulatory | 14 Prostate cancer | 17 (2.0%) | -4 |
| 18 (1.7%) | 15 Prostate cancer | 15 Cirrhosis | 17 (2.0%) | -12 |
| 17 (1.6%) | 16 HIV/AIDS | 16 Other cardio & circulatory | 17 (1.9%) | -13 |
| 16 (1.5%) | 17 Stomach cancer | 17 Congenital anomalies | 13 (1.5%) | -50 |
| 15 (1.4%) | 18 Pancreatic cancer | 18 Brain cancer | 13 (1.5%) | 14 |
| 11 (1.1%) | 19 Leukemia | 19 Liver cancer | 11 (1.3%) | 46 |
| 11 (1.1%) | 20 Brain cancer | 20 Leukemia | 11 (1.3%) | -3 |
| 11 (1.1%) | 21 Alzheimers disease | 21 Stomach cancer | 11 (1.2%) | -35 |
| 9 (0.9%) | 22 Rheumatic heart disease | 22 Kidney cancers | 10 (1.2%) | 41 |
| 9 (0.9%) | 23 Hypertensive heart disease | 23 Non-Hodgkin lymphoma | 10 (1.1%) | 7 |
| 9 (0.9%) | 24 Bladder cancer | 24 Ovarian cancer | 9 (1.0%) | -2 |
| 9 (0.9%) | 25 Non-Hodgkin lymphoma | 25 Esophageal cancer | 8 (1.0%) | 7 |
| | 26 Ovarian cancer | 26 Hypertensive heart disease | | |
| | 27 Liver cancer | 27 Bladder cancer | | |
| | 28 Esophageal cancer | 33 HIV/AIDS | | |
| | 31 Kidney cancers | 41 Rheumatic heart disease | | |

This chart shows the change in the top 25 causes of YLLs due to premature mortality from 1990 to 2010. Solid lines indicate a cause has moved up in rank or stayed the same. Broken lines indicate a cause has moved down in rank. The causes are color coded by blue for non-communicable diseases, green for injuries, and red for communicable, maternal, neonatal, and nutritional causes of death.

YEARS LIVED WITH DISABILITY (YLDs)

Years lived with disability (YLDs) are estimated by weighting the prevalence of different conditions based on severity. The top five leading causes of YLDs in Switzerland are major depressive disorder, low back pain, chronic obstructive pulmonary disease, falls, and neck pain.

The size of the colored portion in each bar represents the number of YLDs attributable to each cause. The height of each bar shows which age groups had the most YLDs in 2010. The causes are aggregated. For example, musculoskeletal disorders include low back pain and neck pain.

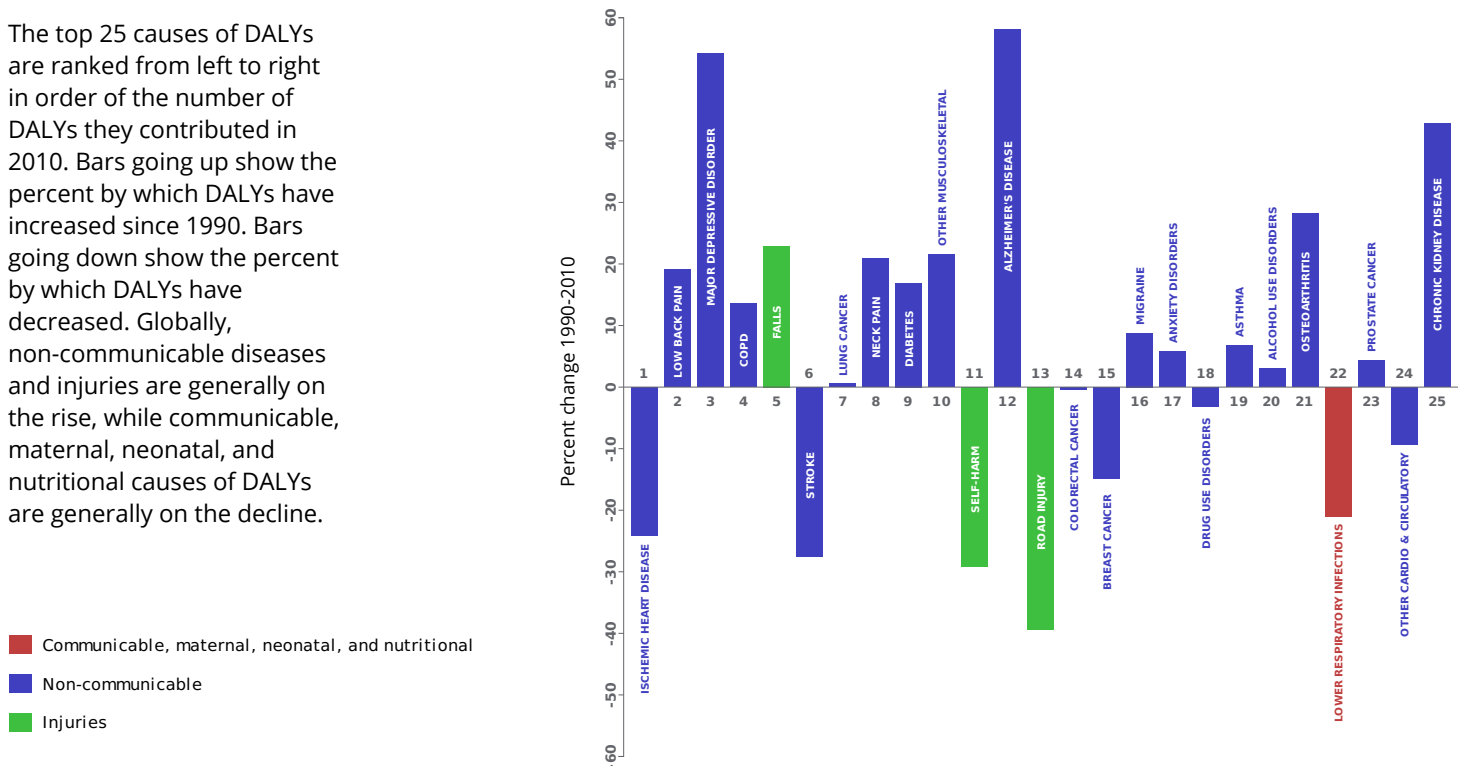


DISABILITY-ADJUSTED LIFE YEARS (DALYs)

Disability-adjusted life years (DALYs) quantify both premature mortality (YLLs) and disability (YLDs) within a population. In Switzerland, the top three causes of DALYs in 2010 were ischemic heart disease, low back pain, and major depressive disorder. Two causes that appeared in the 10 leading causes of DALYs in 2010 and not 1990 were diabetes mellitus and other musculoskeletal disorders.

The top 25 causes of DALYs are ranked from left to right in order of the number of DALYs they contributed in 2010. Bars going up show the percent by which DALYs have increased since 1990. Bars going down show the percent by which DALYs have decreased. Globally, non-communicable diseases and injuries are generally on the rise, while communicable, maternal, neonatal, and nutritional causes of DALYs are generally on the decline.

Leading causes of DALYs and percent change 1990 to 2010 for Switzerland

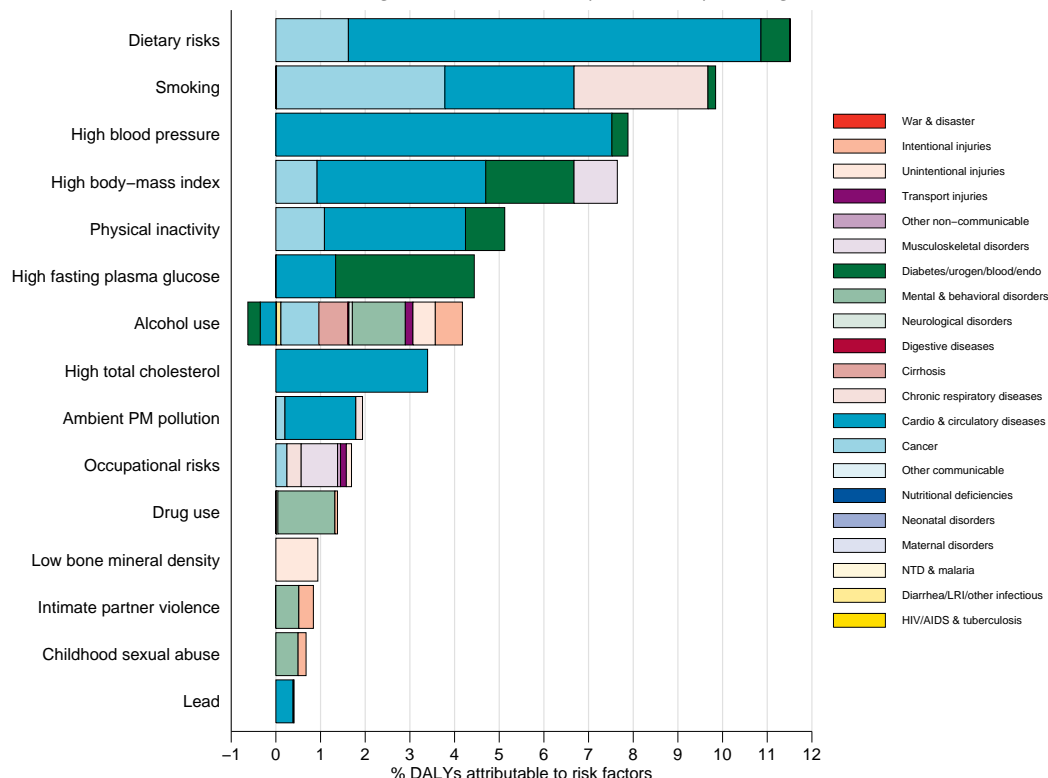


RISK FACTORS

Overall, the three risk factors that account for the most disease burden in Switzerland are dietary risks, tobacco smoking, and high blood pressure. The leading risk factors for children under 5 and adults aged 15-49 years were tobacco smoking and alcohol use, respectively, in 2010. Tobacco smoking as a risk factor for children is due to second-hand smoke exposure.

Burden of disease attributable to 15 leading risk factors in 2010, expressed as a percentage of Switzerland DALYs

The graph shows the top 15 risk factors for Switzerland. The colored portion of each bar represents the specific diseases attributable to that risk factor while bar size represents the percentage of DALYs linked to specific risk factors.



COUNTRY BENCHMARKING OF BURDEN OF DISEASE

Understanding the relative performance of Switzerland against other comparator countries provides key insight into public health successes and areas where Switzerland might be falling behind. The table identifies Switzerland's rank across 14 other comparator countries, selected and ordered by income per capita, for five metrics of interest, with 1 indicating the best rank and 15 indicating the worst rank.

- Age-standardized rates are used to make meaningful comparisons across time by adjusting for changes in population size and age structure.
- Life expectancy incorporates mortality, and health-adjusted life expectancy further incorporates years lived in less than ideal health.
- In 2010, Switzerland ranked 2nd for health-adjusted life expectancy and 4th for age-standardized YLD rate.

| Age-standardized death rates, YLL rates, YLD rates, and life expectancy at birth and health-adjusted life expectancy at birth for 1990 and 2010, both sexes combined | | | | | | | | | | | | | | | | | | | | |
|----------------------------------------------------------------------------------------------------------------------------------------------------------------------|-------------------------------------------|----------|------------|----------|-----------------------------------------|----------|--------------|----------|-----------------------------------------|----------|---------------|----------|--------------------------|----------|-------------|----------|------------------------------------------|----------|-------------|----------|
| Country | Age-standardized death rate (per 100,000) | | | | Age-standardized YLL rate (per 100,000) | | | | Age-standardized YLD rate (per 100,000) | | | | Life expectancy at birth | | | | Health-adjusted life expectancy at birth | | | |
| | 1990 | | 2010 | | 1990 | | 2010 | | 1990 | | 2010 | | 1990 | | 2010 | | 1990 | | 2010 | |
| | Rate | Rank | Rate | Rank | Rate | Rank | Rate | Rank | Rate | Rank | Rate | Rank | LE | Rank | LE | Rank | HALE | Rank | HALE | Rank |
| Andorra | 443 | 1 | 369 | 2 | 9,206 | 1 | 6,832 | 2 | 11,769 | 12 | 11,724 | 12 | 80.3 | 1 | 82.6 | 1 | 68.7 | 1 | 70.3 | 3 |
| Norway | 580 | 9 | 422 | 8 | 12,291 | 8 | 7,904 | 6 | 12,365 | 15 | 12,329 | 15 | 76.8 | 9 | 80.8 | 7 | 65.2 | 13 | 68 | 11 |
| Brunei | 705 | 14 | 576 | 14 | 15,283 | 14 | 11,525 | 13 | 10,711 | 4 | 10,502 | 2 | 74.4 | 14 | 77.2 | 14 | 64.9 | 14 | 67.3 | 13 |
| Singapore | 665 | 12 | 425 | 9 | 14,747 | 12 | 8,192 | 8 | 10,079 | 1 | 9,827 | 1 | 75.3 | 11 | 81 | 6 | 66.4 | 6 | 71.1 | 1 |
| United Arab Emirates | 795 | 15 | 615 | 15 | 18,366 | 15 | 13,157 | 15 | 12,272 | 14 | 11,951 | 14 | 72.7 | 15 | 76.3 | 15 | 62.2 | 15 | 65.1 | 15 |
| Kuwait | 489 | 2 | 511 | 12 | 11,796 | 4 | 12,133 | 14 | 12,022 | 13 | 11,867 | 13 | 77.8 | 2 | 77.4 | 13 | 66.1 | 8 | 65.9 | 14 |
| United States | 639 | 11 | 516 | 13 | 11,447 | 13 | 11,447 | 12 | 10,503 | 2 | 10,509 | 3 | 75.2 | 12 | 78.2 | 12 | 65.6 | 10 | 67.9 | 12 |
| Switzerland | 532 | 3 | 369 | 3 | 11,825 | 5 | 7,071 | 3 | 10,663 | 3 | 10,807 | 4 | 77.5 | 5 | 82.2 | 3 | 67.5 | 2 | 70.8 | 2 |
| Netherlands | 572 | 8 | 426 | 10 | 11,847 | 6 | 7,988 | 7 | 11,355 | 10 | 11,492 | 11 | 77 | 7 | 80.6 | 10 | 66.5 | 5 | 69.1 | 8 |
| Ireland | 692 | 13 | 453 | 11 | 14,298 | 11 | 8,764 | 11 | 11,024 | 7 | 11,138 | 8 | 74.8 | 13 | 79.9 | 11 | 65.2 | 12 | 68.9 | 9 |
| Iceland | 548 | 5 | 365 | 1 | 11,310 | 3 | 6,675 | 1 | 10,763 | 5 | 11,108 | 7 | 77.6 | 3 | 82.2 | 2 | 65.5 | 11 | 68.4 | 10 |
| Australia | 568 | 7 | 389 | 4 | 12,381 | 9 | 7,722 | 5 | 11,153 | 9 | 10,979 | 6 | 76.9 | 8 | 81.5 | 4 | 66.4 | 7 | 70.1 | 4 |
| Canada | 558 | 6 | 422 | 7 | 12,079 | 7 | 8,546 | 10 | 10,806 | 6 | 10,845 | 5 | 77.2 | 6 | 80.6 | 8 | 67 | 3 | 69.6 | 6 |
| Austria | 622 | 10 | 418 | 6 | 13,732 | 10 | 8,401 | 9 | 11,052 | 8 | 11,381 | 10 | 75.7 | 10 | 80.6 | 9 | 65.8 | 9 | 69.1 | 7 |
| Sweden | 539 | 4 | 403 | 5 | 11,196 | 2 | 7,296 | 4 | 11,378 | 11 | 11,250 | 9 | 77.6 | 4 | 81.4 | 5 | 66.8 | 4 | 69.6 | 5 |

COUNTRY BENCHMARKING OF BURDEN OF DISEASE, CONTINUED

This figure shows the rank of Switzerland relative to the same comparator countries for the leading causes of DALYs in 1990 (top) and 2010 (bottom).

- The columns are ordered by the absolute number of DALYs in Switzerland for that particular year, with greatest burden on the left.
- The numbers indicate the rank across countries for each cause in terms of age-standardized DALY rates, with 1 as the best performance and 15 as the worst.

| Ranking of leading age-standardized rates of disability-adjusted life years (DALYs) relative to comparator countries in 1990 | | | | | | | | | | | | | | | | | | | | | | | | | |
|------------------------------------------------------------------------------------------------------------------------------|------------------------|---------------|---------------------------|-----------|---------------------------|-------------|-------------|-----------|-------------|-----------------------|-----------|-----------------------|---------------|-------------------|---------------------|----------------------|-------------------|--------------------|------------------------------|-----------------------|----------------|------------------------------|-----------------------|----------------------------|------------------------|
| Country | Ischemic heart disease | Stroke | Low back pain | COPD | Major depressive disorder | Road injury | Self-harm | Falls | Lung cancer | Neck pain | Diabetes | Other musculoskeletal | Breast cancer | Colorectal cancer | Alzheimer's disease | Congenital anomalies | Migraine | Anxiety disorders | Lower respiratory infections | Drug use disorders | Asthma | Other cardio & circulatory | Alcohol use disorders | Cirrhosis | Prostate cancer |
| Andorra | 1 | 8 | 12 | 5 | 12 | 2 | 4 | 11 | 4 | 13 | 4 | 5 | 5 | 5 | 9 | 2 | 13 | 14 | 2 | 7 | 6 | 10 | 9 | 6 | 5 |
| Norway | 11 | 9 | 15 | 4 | 10 | 5 | 12 | 13 | 6 | 9 | 11 | 7 | 7 | 12 | 11 | 7 | 6 | 15 | 9 | 11 | 9 | 4 | 15 | 4 | 14 |
| Brunei | 3 | 14 | 5 | 13 | 7 | 11 | 3 | 12 | 5 | 4 | 15 | 11 | 3 | 3 | 4 | 14 | 4 | 8 | 13 | 6 | 14 | 8 | 4 | 10 | 2 |
| Singapore | 9 | 13 | 1 | 8 | 11 | 1 | 11 | 3 | 12 | 6 | 12 | 12 | 4 | 15 | 1 | 10 | 1 | 9 | 15 | 3 | 5 | 7 | 3 | 9 | 3 |
| United Arab Emirates | 15 | 15 | 4 | 15 | 15 | 15 | 2 | 9 | 2 | 1 | 13 | 1 | 1 | 2 | 3 | 11 | 2 | 7 | 14 | 15 | 13 | 15 | 2 | 14 | 4 |
| Kuwait | 12 | 11 | 3 | 2 | 14 | 14 | 1 | 4 | 1 | 2 | 14 | 2 | 2 | 1 | 2 | 15 | 3 | 12 | 11 | 2 | 8 | 9 | 1 | 3 | 1 |
| United States | 13 | 3 | 2 | 12 | 6 | 12 | 7 | 1 | 15 | 15 | 10 | 15 | 9 | 8 | 10 | 5 | 5 | 13 | 8 | 13 | 7 | 11 | 12 | 13 | 8 |
| Switzerland | 2 | 4 | 6 | 11 | 8 | 9 | 15 | 15 | 7 | 12 | 7 | 6 | 12 | 7 | 14 | 12 | 12 | 3 | 5 | 8 | 4 | 5 | 10 | 12 | 12 |
| Netherlands | 4 | 7 | 8 | 9 | 13 | 4 | 5 | 5 | 14 | 8 | 6 | 10 | 15 | 10 | 6 | 9 | 8 | 11 | 4 | 1 | 1 | 14 | 5 | 5 | 7 |
| Ireland | 14 | 10 | 13 | 14 | 1 | 7 | 6 | 10 | 11 | 11 | 5 | 9 | 13 | 14 | 7 | 13 | 10 | 5 | 12 | 5 | 11 | 13 | 6 | 2 | 10 |
| Iceland | 7 | 2 | 10 | 3 | 4 | 6 | 9 | 8 | 10 | 14 | 1 | 4 | 14 | 4 | 8 | 1 | 11 | 1 | 10 | 9 | 3 | 2 | 11 | 1 | 15 |
| Australia | 6 | 5 | 7 | 10 | 2 | 10 | 8 | 6 | 9 | 5 | 2 | 13 | 8 | 13 | 13 | 3 | 15 | 10 | 1 | 14 | 15 | 3 | 7 | 8 | 11 |
| Canada | 5 | 1 | 9 | 7 | 3 | 8 | 10 | 2 | 13 | 7 | 8 | 14 | 10 | 9 | 15 | 4 | 7 | 2 | 6 | 10 | 10 | 1 | 8 | 11 | 9 |
| Austria | 10 | 12 | 11 | 6 | 5 | 13 | 14 | 14 | 8 | 10 | 9 | 8 | 11 | 11 | 5 | 8 | 9 | 4 | 3 | 12 | 2 | 12 | 13 | 15 | 6 |
| Sweden | 8 | 6 | 14 | 1 | 9 | 3 | 13 | 7 | 3 | 3 | 3 | 3 | 6 | 6 | 12 | 6 | 14 | 6 | 7 | 4 | 12 | 6 | 14 | 7 | 13 |
| Ranking of leading age-standardized rates of disability-adjusted life years (DALYs) relative to comparator countries in 2010 | | | | | | | | | | | | | | | | | | | | | | | | | |
| Country | Ischemic heart disease | Low back pain | Major depressive disorder | COPD | Falls | Stroke | Lung cancer | Neck pain | Diabetes | Other musculoskeletal | Self-harm | Alzheimer's disease | Road injury | Colorectal cancer | Breast cancer | Migraine | Anxiety disorders | Drug use disorders | Asthma | Alcohol use disorders | Osteoarthritis | Lower respiratory infections | Prostate cancer | Other cardio & circulatory | Chronic kidney disease |
| Andorra | 9 | 11 | 12 | 5 | 11 | 11 | 4 | 12 | 6 | 8 | 4 | 8 | 3 | 11 | 5 | 10 | 12 | 7 | 11 | 7 | 4 | 6 | 11 | 9 | 10 |
| Norway | 5 | 15 | 10 | 7 | 13 | 6 | 9 | 9 | 10 | 6 | 9 | 11 | 6 | 14 | 8 | 6 | 15 | 12 | 7 | 15 | 1 | 8 | 14 | 7 | 1 |
| Brunei | 13 | 5 | 4 | 12 | 4 | 14 | 6 | 4 | 15 | 13 | 3 | 4 | 12 | 5 | 2 | 5 | 7 | 3 | 8 | 4 | 12 | 14 | 2 | 3 | 14 |
| Singapore | 11 | 1 | 9 | 1 | 3 | 12 | 8 | 5 | 12 | 11 | 7 | 2 | 1 | 10 | 4 | 1 | 8 | 1 | 1 | 2 | 13 | 15 | 1 | 1 | 11 |
| United Arab Emirates | 15 | 4 | 15 | 14 | 5 | 15 | 2 | 1 | 13 | 1 | 2 | 3 | 15 | 2 | 1 | 2 | 5 | 14 | 5 | 1 | 15 | 12 | 4 | 15 | 13 |
| Kuwait | 14 | 3 | 13 | 4 | 7 | 13 | 1 | 2 | 14 | 2 | 1 | 1 | 14 | 1 | 3 | 3 | 11 | 6 | 10 | 3 | 14 | 13 | 3 | 11 | 15 |
| United States | 12 | 2 | 5 | 15 | 2 | 10 | 14 | 15 | 11 | 15 | 10 | 15 | 13 | 6 | 11 | 4 | 14 | 15 | 9 | 12 | 9 | 10 | 8 | 13 | 12 |
| Switzerland | 2 | 6 | 11 | 13 | 15 | 3 | 7 | 14 | 7 | 3 | 15 | 6 | 8 | 4 | 12 | 13 | 3 | 4 | 6 | 9 | 7 | 3 | 7 | 2 | 3 |
| Netherlands | 1 | 9 | 14 | 11 | 9 | 8 | 15 | 7 | 2 | 9 | 5 | 10 | 5 | 15 | 15 | 8 | 9 | 2 | 3 | 6 | 2 | 9 | 9 | 14 | 5 |
| Ireland | 10 | 12 | 2 | 10 | 12 | 9 | 12 | 11 | 4 | 10 | 11 | 7 | 9 | 13 | 14 | 12 | 4 | 9 | 12 | 11 | 5 | 11 | 10 | 10 | 7 |
| Iceland | 4 | 10 | 6 | 2 | 8 | 1 | 10 | 13 | 1 | 4 | 6 | 14 | 2 | 3 | 6 | 11 | 13 | 8 | 4 | 10 | 8 | 4 | 15 | 5 | 4 |
| Australia | 3 | 7 | 1 | 8 | 6 | 2 | 5 | 6 | 3 | 12 | 8 | 9 | 11 | 12 | 10 | 15 | 10 | 13 | 15 | 5 | 3 | 2 | 12 | 6 | 6 |
| Canada | 7 | 8 | 3 | 6 | 1 | 4 | 13 | 10 | 9 | 14 | 12 | 13 | 7 | 9 | 13 | 7 | 1 | 11 | 13 | 8 | 11 | 7 | 6 | 4 | 9 |
| Austria | 8 | 13 | 8 | 9 | 14 | 7 | 11 | 8 | 8 | 7 | 14 | 5 | 10 | 7 | 9 | 9 | 2 | 10 | 2 | 13 | 6 | 1 | 5 | 12 | 8 |
| Sweden | 6 | 14 | 7 | 3 | 10 | 5 | 3 | 3 | 5 | 5 | 13 | 12 | 4 | 8 | 7 | 14 | 6 | 5 | 14 | 14 | 10 | 5 | 13 | 8 | 2 |
| Ranking Legend | 1 - 3 | | | 4 - 7 | | | | 8 - 11 | | | | | 12 - 15 | | | | | | | | | | | | |