

Local Burden of Disease and Global Burden of Disease use many of the same types of data sources, such as:



Censuses



Household surveys



Disease notifications



Vital and sample registration systems

**LOCAL BURDEN OF DISEASE**

Can be representative of any geographic area (local, provincial, etc.)






**GLOBAL BURDEN OF DISEASE**

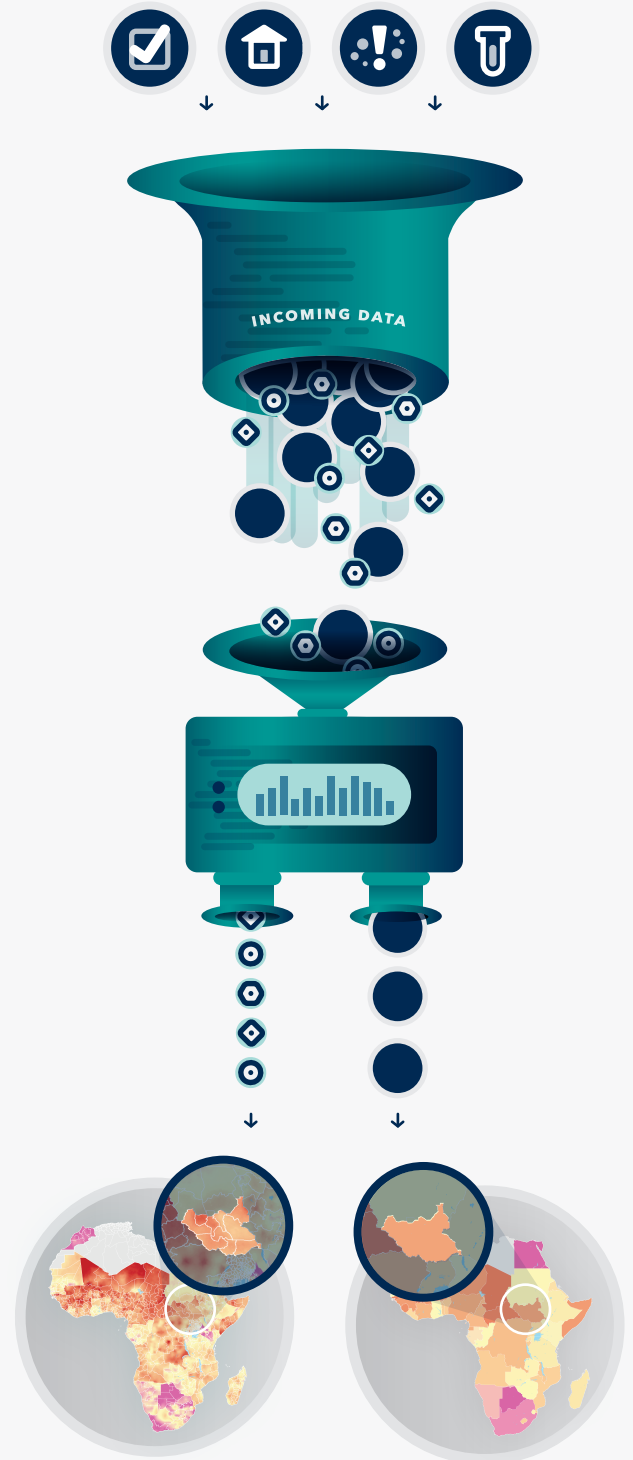
Must be nationally representative in most cases



LBD can use these types of data when they are matched to:

-  **BEST**      GPS coordinates
-  **BETTER**      Specific place names of villages or enumeration areas
-  **GOOD**      Counties, districts, or other small administrative areas

Using more precise data allows LBD to produce more precise maps of health indicators.



Want to share your data with us or have questions?

Please contact Maha Ezalarab at [ezalam@uw.edu](mailto:ezalam@uw.edu) or go to our website [healthdata.org/lbd](http://healthdata.org/lbd).