

DIABETES

Global prevalence for 2021

529 MILLION



43 countries and territories have age-standardized prevalence greater than 10%, with the highest prevalence rate seen in the North Africa and the Middle East region.

Global forecasts for 2050

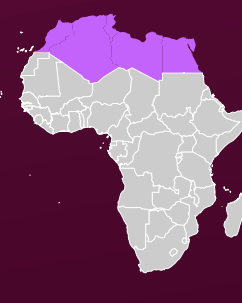
1.3 BILLION



Prevalence rate projected to

16.8%

in the super-region of North Africa and the Middle East



North Africa



Middle East



Prevalence rate projected to

11.3%

in the super-region of Latin America and the Caribbean



Latin America

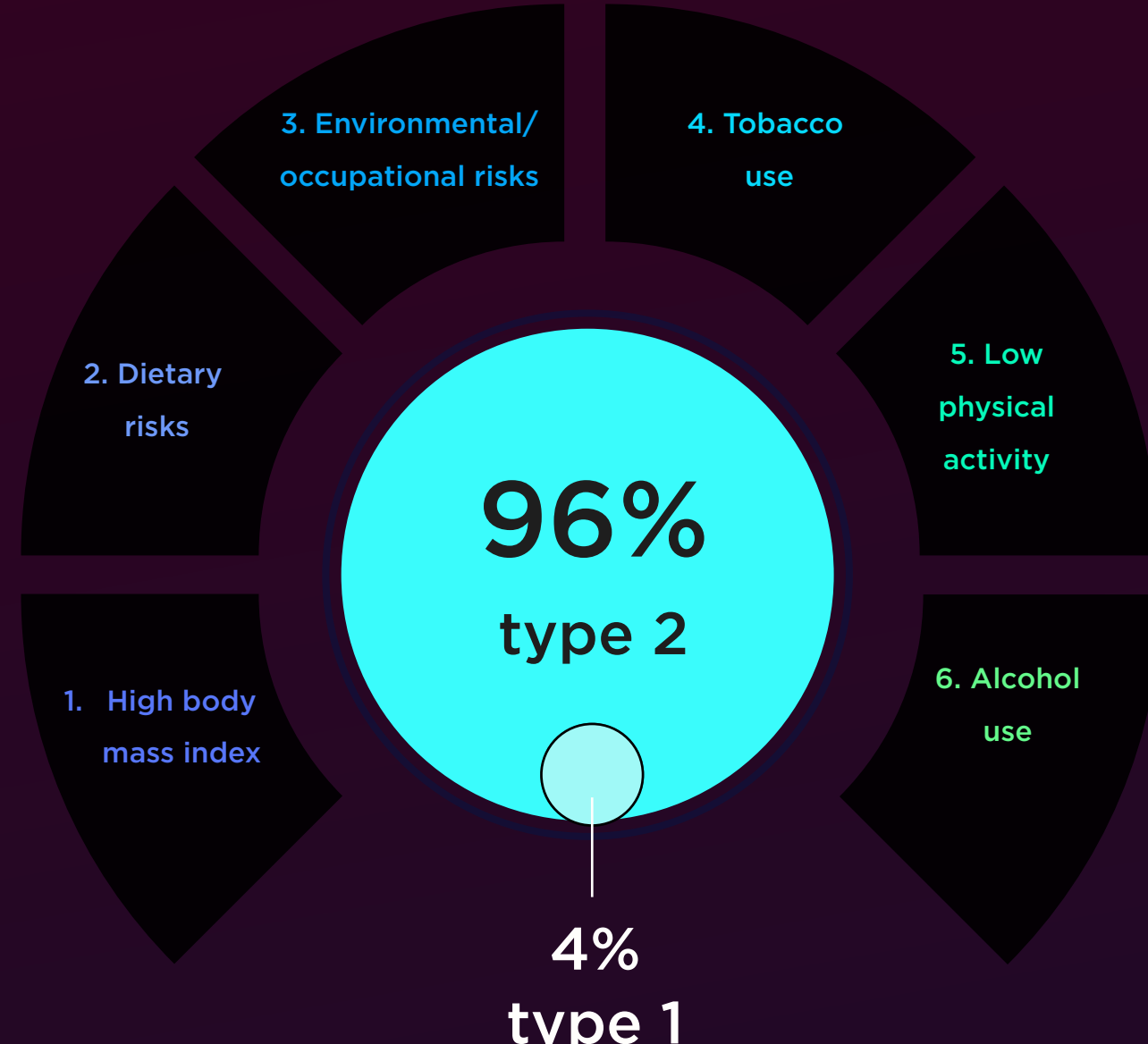


Caribbean

Every country to see an increase

96% of all global cases are type 2 diabetes.

Top risk factors associated with type 2 diabetes



Intervention

Low- and middle-income countries (LMICs) face the greatest challenge with the rapidly increasing diabetes burden.



People in LMICs experience: underfunded and ill-prepared health care systems, physical inactivity, and socioeconomic challenges such as poverty and poor nutrition.



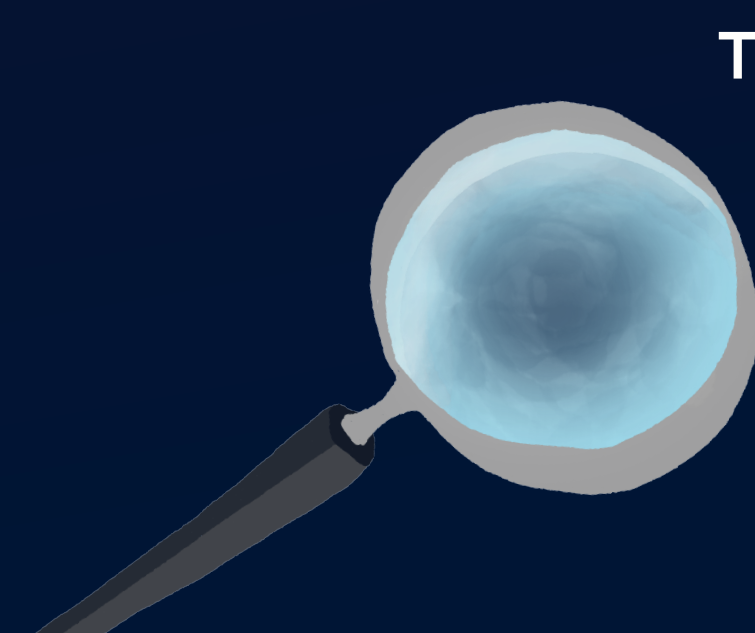
2021

529 MILLION



2050

1.3 BILLION



This study emphasizes the pressing need for accurate, focused data to guide the development of effective programs targeting these factors.

Citation: Ong, K.L., GBD 2021 Diabetes Collaborators, Vos, T. Global, the regional, and national burden of diabetes 1990–2021 and projections to 2050: a systematic analysis for the Global Burden of Disease Study 2021. *The Lancet*, 2023